

Adam Horton

0



Meeting Request — Partner



Partner

Extra resources from recycling allow students to better do work. Once per turn, target professor gets -1/-0 for this turn.

Adam has been known to remove his boot and throw it at people for telling bad jokes.

0/4

Alex Dillon

0



Meeting Request — VOP

0

VOP (This has no effect on Alex)

Worthless- All students get +0/+0.

"I want my card to be the most common and the most worthless card in the game"

0/1



Meeting Request — Student



Amanda receives +0/+1 when the Bio Lab is in play.

Amanda receives +0/+1 when Krystin Stafford is in play.

Amanda Blackwood has a fabulous silver truck and is always willing to use it to help out students.

Ann Marie Rynning

0



Meeting Request — Partner



Partner

Ann Marie Rynning may do work as if she was 2 students due to increased stamina.

"A rising tide lifts all boats"

0/5



Meeting Request — Student



Caitlin Foley is the only Olin student from Arizona.

Cheryl Inouye

0



Meeting Request — Partner



Partner

At the start of your turn, place a sleep counter on Cheryl. At any time you may remove 3 counters from Cheryl to either give or remove 1 hour of sleep to target player.

During partner year, Cheryl was never fully asleep and never fully awake.

0/2

Chris Murphy



Meeting Request — VOP



VOP

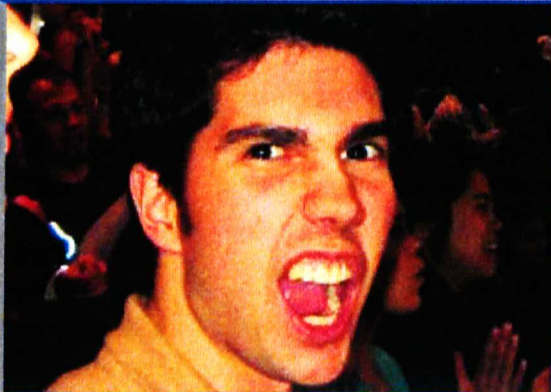
Hacker

It seems as though Chris Murphy has an inexhaustible supply of Ubuntu CDs.

0/3

Dan Lindquist

0



Meeting Request — Partner



Partner

Hacker

At the start of each turn, declare a student.
This student is put on a committee and thereby
given -0/-1 until the start of your next turn.

*Dan Lindquist spends more time at Wellesley
than some Wellesley students.*

0/3

Drew Harry

0



Meeting Request — VOP



VOP

Hacker

Even though he was CORE President, Christine Kelly can still make Drew cut his hair whenever she wants.

0/3

Emma Goodman

0



Meeting Request — Student



At the beginning of each of your turns, declare a student in play. Emma gains this student's special abilities until the beginning of your next turn.

Emma Goodman: World Class Actress and Engineer. And if that wasn't enough, she plays Halo.

0/3

Etosha Cave

0



Meeting Request — Student

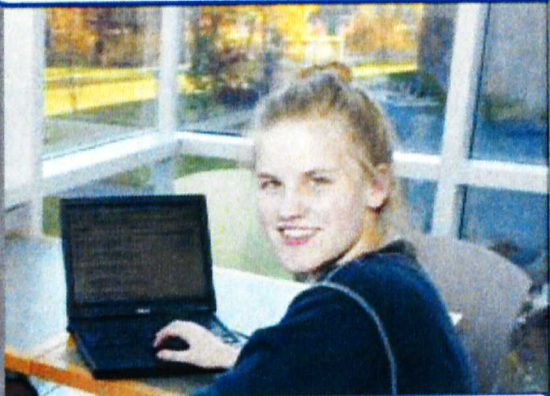
0

Etosha's alter ego is Tina Turner.

0/4

Frances Haugen

0



Meeting Request — Student



Put Frances to sleep to cause target player's professors and students to not do or assign any work until your next turn. They must stop to ponder "Why?"

Her blond hair and rosy cheeks may lull you into a false sense of complacency, but if you talk to her for long enough, and she'll make you question your fundamental beliefs on anything from Justice to Monogamy.

0/4

Grant Hutchins

0



15	\$1 MILLION
14	\$500,000
13	\$250,000
12	\$100,000
11	\$50,000
10	\$25,000
9	\$10,000
8	\$5,000
7	\$2,500
6	\$1,000
5	\$500
4	\$250
3	\$100
2	\$50
1	\$10

Meeting Request — Partner



Partner
Hacker

Grant is known for composing electronic music, crazy dancing, and always wearing earth tones.

0/3

Jake Graham

0



Meeting Request — VOP



VOP

During his partner year, Jake was a choir teacher at his high school.

0/3

James Krejcarek

0



Meeting Request — Partner



Partner

Put James to bed to take control of 2 students for one turn. Use this ability instead of doing work.

"HAHAHAHAHAHA!"

0/3

Janet Tsai

0



Meeting Request — Student



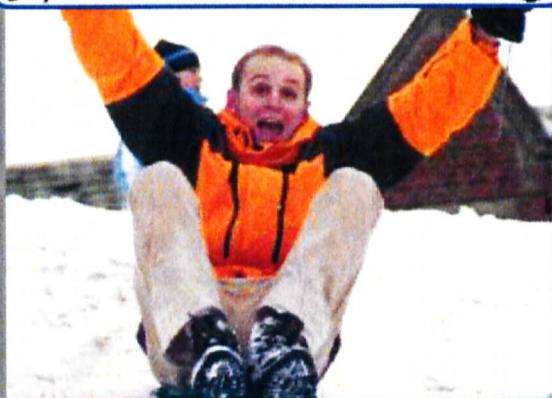
The Janetor cleans, giving all students +0/+1.

"Dude, !@#%\$!^%*%# @\$
0/^ *"

0/4

Jay Gantz

0



Meeting Request — Student



Jay Gantz, at one point in his life, had pink hair.

0/3

Jeff Satwicz

0



Meeting Request — Partner



Partner

At the start of your turn, place a counter on Jeff. At any point, you may remove 4 counters from Jeff to make target student "vanish." A vanished student may not do work or use a special ability.

Jeff restored a '69 Charger to be General Lee.

0/4

Jerzy Wieczorek

0



Meeting Request — Student



Jerzy has not taken any "real engineering classes" since his sophomore year (except for SCOPE, but "even that's a fuzzy design project")

0/3

Jesus Fernandez

0



Meeting Request — Partner



Partner

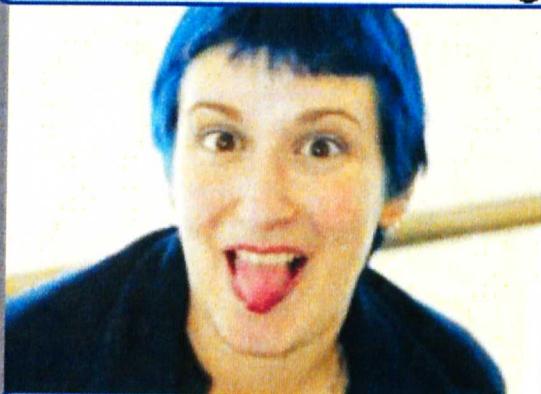
Gamer

Jesus has, on multiple occasions, pretended to be a Wellesley student. He has yet to convince anyone of the fact.

0/3

Joelle Arnold

0



Meeting Request — Partner



Partner

Put Joelle to bed to gain 3 hours of sleep.

Joelle gets +0/+1 when the Mat. Sci Lab is in play.

"When was the last time YOU slept through your T stop?"

0/3

Jon Chambers

0



Meeting Request — Student



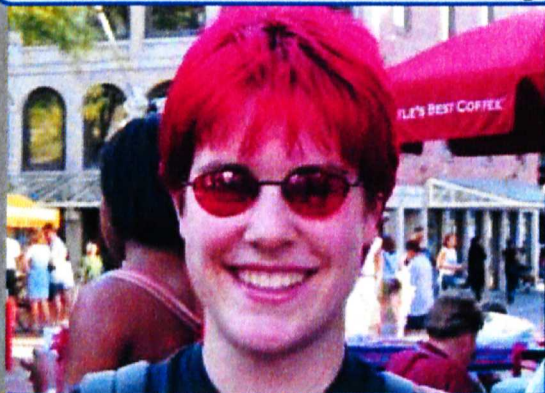
Hacker

Despite being a mechie, Jon is a computer whiz.

0/3

Kate Blazek

0



Meeting Request — Partner



Partner

Kate receives +0/+1 when Joelle Arnold is in play, due to the sisterhood of the colored hair.

Kate's hair was cherry bomb red during Partner Year.

0/3



Meeting Request — Student



Kate receives +0/+1 for each student named "Kate" in play

As a child, Kate rode her tricycle to Canada.

Kate Walsh

0



Meeting Request — Student



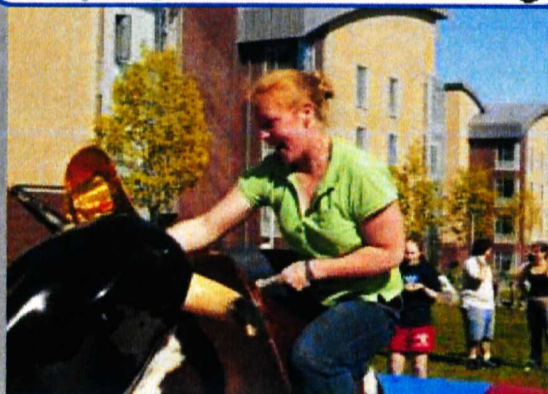
When Kate comes into play, you may search your deck for a different student named Kate and place that card in your hand. This ability may only be used once.

Despite her name actually being Mary Katherine, Kate Walsh was the star of www.kateorkate.com.

0/3

Kathy King

0



Meeting Request — Partner



Partner

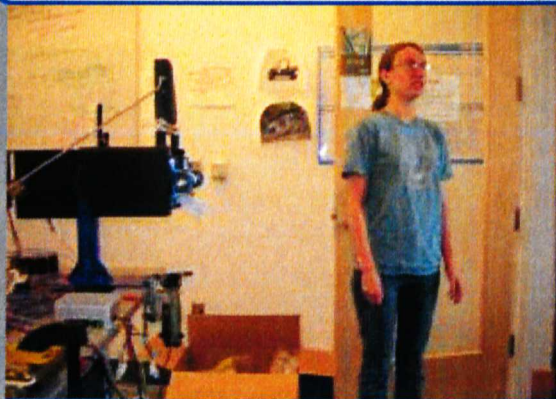
*"She plays Rugby... and... can
kill... people"*

-Chris Murphy

0/3

Katie Rivard

0



Meeting Request — Student



Hacker

Developer of Skynet: Alpha Release.

Skynet Beta will come with a plug-in for Lindy Hop.

0/3

Kevin "Toastmaster K" Tostado

0



Meeting Request — Student



Each turn, place a community involvement counter on Kevin. At any time, you may remove 2 counters to draw a card.

Kevin Tostado has been on SAC all four years while at Olin.

0/3

Kori Ann Haymore

0



Meeting Request — Student



When Kori comes into play from your hand, search your deck for a location, and place this location in your hand. Shuffle your deck.

Kori can go places where no one else can.

0/3

Krystin Stafford

0



Meeting Request — Student



Krystin receives +0/+1 when Amanda Blackwood is in play.

Instead of doing work, Krystin may bury target student in her shoes, preventing them from doing work during their next turn.

Krystin Stafford has over 40 pairs of shoes.

0/3



Meeting Request — Student



At the beginning of each of your turns, put a sleep-deprivation counter on Luis. You may remove 4 counters to cause target player to lose one hour of sleep.

"Once, after not sleeping for 3 nights, I looked out my West Hall corner room and swore that the small trees in the O were slowly walking towards me, swaying from side to side and kinda shaking their branches."

Matt Hill

0



Meeting Request — Partner



Partner

Play a volleyball to give Matt +0/+4.

Matt thought he was to be the most powerful card in the game, but much to his chagrin, there is no volleyball card.

0/4



Meeting Request — Student



Ganier

If you have lost less than 2 hour of sleep this turn, X=2.
Otherwise, X=6.

Instead of doing work, Michael and Seth build a bonfire giving all students -0/-1 until the end of the turn. Draw a card.

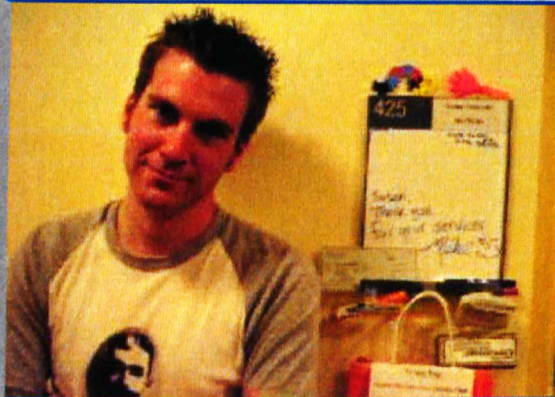
Seth: "The point I'm arguing can't actually be made..."

Michael: "You're boring."

Seth: "Poop"

Michael Tungsten Curtis

0



Meeting Request — Student



Hacker

Outlook NINJA- Mike Curtis does not count as a meeting request to bring out.

Michael Tungsten Curtis is actually made of lies, with a suite nougat center.

0/3

Mike Foss

0



Meeting Request — Student



Gamer

Mike gives +0/+1 to all gamers.

From beating a level in Super Mario Bros. while blindfolded to playing while on the treadmill, this guy is hardcore.

0/3



Meeting Request — Student



With her whining, Miks causes each player to lose 1 hour of sleep at the end of your turn.

"Stop whining, Miks!"

*-Chris Murphy, Sean Munson,
Drew Harry, Jon Chambers, et al.*

Nick Zola

0



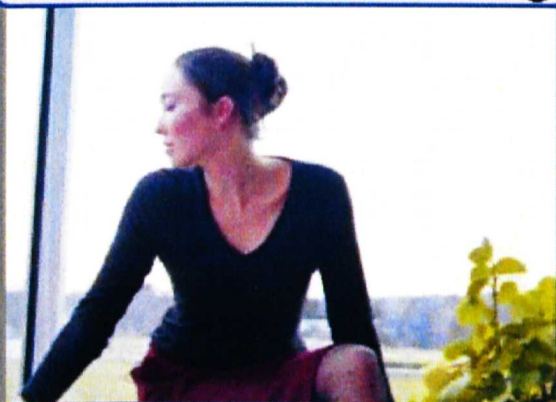
Meeting Request — Partner



Partner

Nick Zola was the founder of the Franklin W. Olin Players.

0/4



Meeting Request — Partner



Partner

Nicole enjoys plants of all kinds, but especially orchids.

Polina Segalova

0



Meeting Request — Partner



Partner

Polina may do work as if she was two students, due to increased stamina.

Polina became a U.S. Citizen while at Olin.

0/4

Que Anh Nguyen

0



Meeting Request — Partner



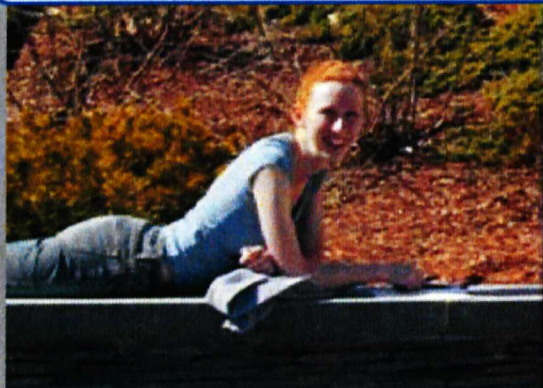
Partner

5'0" JROTC battalion commander; incredible power density; not to be trifled with

0/4

Sa'am Oliver

0



Meeting Request — VOP

0

VOP

During her VOP year, Sa'am worked for Americorps.

0/3

Sarah Leavitt

0



Meeting Request — Student



Sarah massages target student giving them +0/+2 until the end of turn. Use this ability instead of doing work.

"Hugs are freakin' sweet!"

0/3

Sarah Zwicker

0



Meeting Request — VOP



VOP

Zwicker is a tough act to follow... literally

0/3



Meeting Request — Student



Counter

At the start of each turn, place a counter on this card. Remove 3 counters to send target student to the Honor Board. They may not do work for 2 turns.

In the middle of the night, Seth climbs to the top of a crane to place a flag creating a hula hoo, giving all professors get -1-0 until the end of the turn. You lose an hour of sleep.

Seth: "Instead of having the Honor Code, I think it should be called the Code of Honour. And instead of having the Honor Board..."

Michael: "You're boring."

Seth: "Toop"

Steve Krumholz

0



Meeting Request — Partner



Partner

Gamer

Steve gets +0/+1 when a Lab is in play.

“Contrary to popular belief, Steve is not obsessed with penguins.”

0/4

Steve Shannon

0



Meeting Request — VOP



VOP

Steve plays the drums causing target player to lose 1 hour of sleep. Use this power instead of doing work.

Walk tall -- and carry a big stick.

0/3

Susan Fredholm

0



Meeting Request — Partner



Partner

“Gotta eat, gotta sleep, gotta engineer, gotta dance!”

0/3

Tom Kocher

0



Meeting Request — Student



+0/+1 if Kevin Tostado is in play

*Mechanical engineering student
by day, film-maker by night...
LATE night.*

0/3

Tommy "T-Train" Cecil

0



Meeting Request — VOP



VOP

Administrative Intervention- Put Tommy to sleep to prevent all work for one turn.

No agenda, no basketball.

0/3

Will Clayton

0



Meeting Request — Partner



Partner

*His "sighs" were heard
round the world.*

0/4

Abbey Swank

0



Meeting Request — Student



Due to increased stamina, Abbey may do work as if she was two students.

Abbey has enough Texas pride for the whole school.

0/5

Adam "Joe" College

0



Meeting Request — Student



At the start of each turn place a humor counter on Joe. At any time remove 3 counters to cause target student to laugh, preventing him from doing any work for one turn.

In the Material Science Lab, Joe once caught some molten metal with tongs.

0/3

Alex Epstein

0



Meeting Request — Student



When Alex comes into play he uses his intense knowledge of the MBTA to find target location. Search your deck for a location and bring it into play. Shuffle your deck.

"You can take the boy out of Brooklyn, but you can't take the Brooklyn out of the boy"

0/3

Alex Wheeler

0



Meeting Request — Student



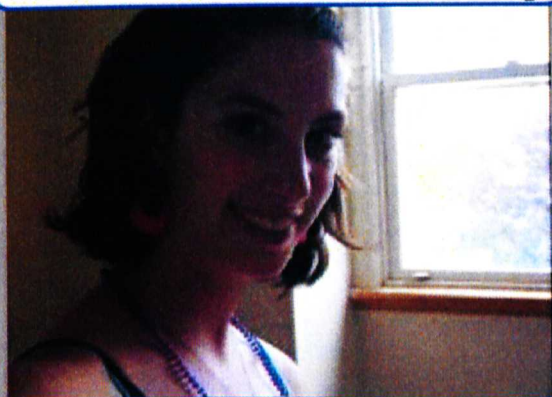
When Alex comes into play, her boundless energy gives you 1 hour of sleep. Put Alex to sleep to gain 2 hours of sleep.

Alex is described by many as being "bouncy" and "squeaky."

0/3

Ali Badala

0



Meeting Request — Student



Ali receives +0/+1 when the Design Studio is in play

In addition to dancing, Ali is a prominent member of SAC.

0/3

Alison Lee

0



Meeting Request — Student



When Alison comes into play, choose two students to be friends of Alison. Each of these students receives +0/+1 while Alison is in play.

"Alison Lee is like the greatest person ever"
-Simon Helmore

0/3

Allison Schmidt

0



Meeting Request — Student



When Allison comes into play, search your deck for an event. Place this event in your hand. Shuffle your deck.

Allison Schmidt has a pilot's license.

0/3



Meeting Request — Student



Overloader: 4

Tekkinesis

"It is not the critic who counts... The credit belongs to the man who is actually in the arena, whose face is marked by dust and sweat and blood... who at the best knows in the end the triumph of high achievement, and who at the worst, if he fails, at least fails while daring greatly, so that his place shall never be with those cold and timid souls who neither know victory nor defeat."

-Teddy Roosevelt

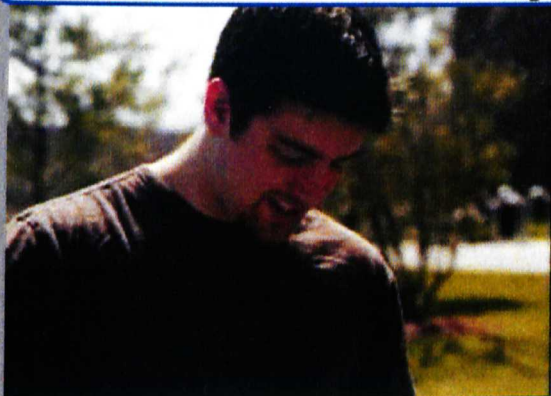
**Meeting Request — Student**

Ben takes target student on a Slurpee run, giving them +0/+2 until the end of the turn. Use this ability instead of doing work and at most once per turn.

Ben Hill gets a Slurpee in every blizzard.

Brendan Donis

0



Meeting Request — Student



Gamer

When Brendan comes into play, search through your deck for Dean Dicker and bring him into play. Shuffle your deck.

"I use the week to recover from the weekend."

0/3

Brian Shih-The Clash-BShih-P4Shih. 0



Meeting Request — Student

Hacker

Gamer

At any time, declare a student for Brian to play Starcraft against. Remove both Brian and the target student from play.

"Do not play Starcraft against this man."

0/3

Cathy Murphie

0



Meeting Request — Student

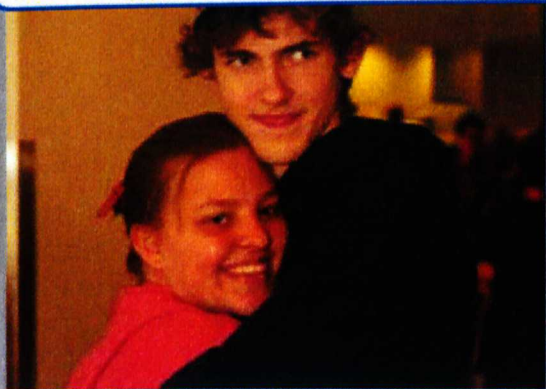


Cathy enjoys skiing of all types, and even did a *Passionate Pursuit* in Alpine Skiing.

0/4

Chandra Little

0



Meeting Request — Student



When Chandra comes into play you may wake up target sleeping student.

Instead of doing work, Chandra can hug one student to give them +0/+1 until the end of the turn.

HUGS!

0/2



Meeting Request — Student



If Char does not do work one turn, place a party counter on Char. At any time, you may remove 3 counters to remove 2 stress counters from 3 other students.

Char spent a semester abroad in Australia.

Chris Doyle

0



Meeting Request — Student



If Chris does not do work one turn, place a music counter on him. At any time, remove 2 counters to cause target player to lose 1 hour of sleep.

Having grown up in Needham, Chris not only knows all the backroads, but is immune to the boredom of the town.

0/2

Christie Lee

0



Meeting Request — Student



Outlook Ninja- Christie Lee does not require a meeting request to play.

Christie Lee is a master manipulator- before you know it, she'll have you carrying around trash for a week.

0/3



Meeting Request — Student



When Cody comes into play, he builds a Tesla Coil, causing the prox card reader at target location to be useless. Remove target location from the game.

"Prox card readers, marx generators, EMPs, I've built 'em all. Oh yeah, and a two story tesla coil."

**Meeting Request — Student**

Gamer

If DJ does not do work one turn, he may write a whiny emo story, which depresses target student, preventing that student from doing work the next turn.

"Matilda's eyes have been glued to the paper for several silent minutes, leaving me to stew in my own anxious juices and make poor guesses at what she made of the words on the page. What will she say? What will be her response?"

Dave Wurtz

0



Meeting Request — Student



Dave used to sell fake bags from the streets of New York on eBay. He has also been known to say, "You're a towel!"

0/4

David Boy

0



Meeting Request — Student



Cooking

Instead of doing work, David may play frisbee with up to two other students, giving them +0/+1 for this turn.

"Yeah, toast!"

0/3

Dean Dieker

0



Meeting Request — Student



Gamer

+0/+1 when Brendan is in play.

Dean is a ninja (but the real kind, not the Olin kind).

0/3

Eric Gallimore

0



Meeting Request — Student



ECE Stockroom: 1

Hacker

"Yeah Gill, we know it's great."

0/4

Eric VanWyk

0



Meeting Request — Student



Hacker

Eric VanWyk is an avid programmer, and enjoys helping with FIRST robotics.

0/3



Meeting Request — Student



If George does not do work one turn, place a party counter on George. At any time, you may remove 3 counters to remove 2 stress counters from 3 other students.

George was the winner of Mu Omicron Delta's Drunklympics triathlon.

Hans Solo Luke Skywalker Buck Robert Borchardt

0



Meeting Request — Student



Put Hans to sleep to cause any male or female student to fall asleep.

Yes, that is his real name.

0/3



Meeting Request — Student



Jeff comes into play with a counter. At any point, remove this counter to send target player to the ER causing them to lose 3 hours of sleep.

Jeff shanked a third grader in the back with a pair of scissors because the kid said his J looked like an H in art class.

**Meeting Request — Student**

When Jo comes into play, gain 1 hour of sleep. You may put her to sleep to gain 2 hours of sleep.

"..., eh."

Jon Pollack

0



Meeting Request — Student



Jon receives +0/+1 when Karst is in play.

Jon may only receive stress counters from professors.

"Where did all my dining dollars go.....?"

0/4



Meeting Request — Student

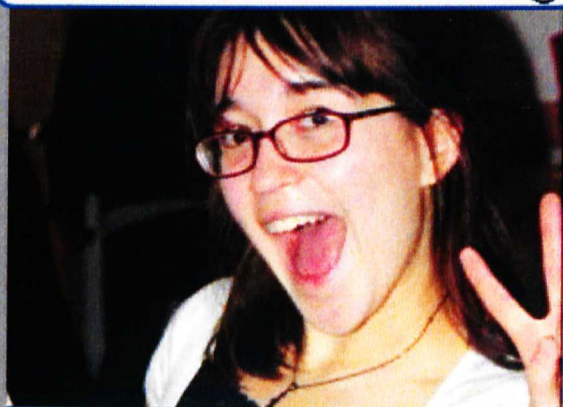


At the start of each turn, place an athletic counter on Juliana. At any time, remove 3 counters to give target player 1 hour of sleep.

Juliana managed to get lost every time she left campus freshman year. She has since gotten better, mainly by never leaving campus alone.

Kat Kim

0



Meeting Request — Student



ECE Stockroom: 1

Kat Kim is so hot!

0/3

Keoni Mahelona

0



Meeting Request — Student



From cleaning, Keoni gives all your students +0/+1

His Espresso acts are quite possibly the most anticipated events of the semester; now if only he did them shirtless...

0/3



Meeting Request — Student



ECE Stockroom: 1

Once, when picking out a picture frame for someone else's girlfriend, asked herself, "Now, if I was a girl, what would I like?"



Meeting Request — Student



"It's my right to do stupid things. Some people get tattoos. I change my name to "Nor" and make all social interactions very awkward."



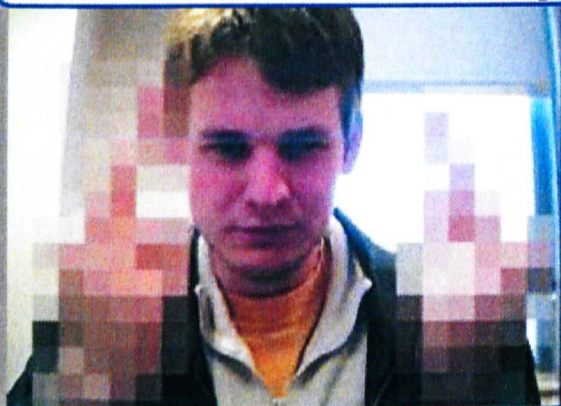
Meeting Request — Student



Lauren Hafford has been known to lick just about anything, ranging from floors to a rock where Viggo Mortensen sat.

Lee Edwards

0



Meeting Request — Student



Gain 1.

During your turn, you may discard a student or professor from hand to draw 2 cards.

Lee does not receive stress from students, but may not do work from professors while you control any other student who could do the work.

"Hey, Robin... Hey Robin... Guess what?"

0/2

Lilly Cho

0



Meeting Request — Student



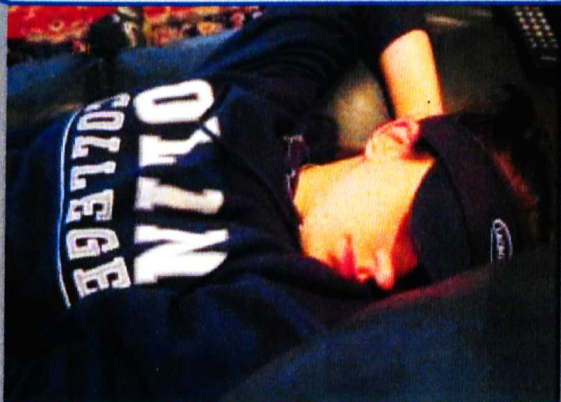
At the start of your turn, place a community initiative counter on Lilly. At any time you may remove 3 counters to give all students you control +0/+1.

Lilly practically runs the school, with her intense involvement in many important organizations.

0/4

Lindsay Gordon

0



Meeting Request — Student



Lgor is a trilingual Texan, Australian Jew.

0/4

Mark Penner

0



Meeting Request — Student



At the start of your turn, place one counter on Mark. Remove 4 counters to give Mark +0/+2 for one turn.

Once considered "gangsta", Mark lost all credibility by being seen skipping by himself.

0/3

Matt Colyer

0



Meeting Request — Student



Hacker

Matt is a big proponent for Open Source software.

0/4



Meeting Request — Student



Instead of doing work, Matt may remove 2 stress counters from up to 2 students by using his NINJA powers.

"Wow... you're paid to sit in the library and be my friend each week?"

Matty Brouillard

0



Meeting Request — Student



If Matty B doesn't do any work during your turn, place a SAC counter on him. You may remove 5 counters to throw a SAC event to give all your student +0/+1 until the end of the turn.

"Save a horse, ride a cowboy."

0/3

Mel Chua

0



Meeting Request — Student



Overloader: 4

Hacker

It is rumored that Mel is actually an anthropology PhD student from a parallel dimension investigating the development of the human higher-education system. She has been very amused thus far.

0/4

Michael Wu

0



Meeting Request — Robot



Gamer

Hacker

ECE Stockroom: 1

Michael Wu is a robot. When his room is too hot, Michael Wu shuts down and cannot do work.

0/3

Mike Siripong

0



Meeting Request — Student



When Mike enters play, target an opponent's student to make fun of. Target student loses all attached Time Sinks.

Mike Siripong is the official police force of the Olin E-mail Server.

0/4

Molly McCormack

0



Meeting Request — Student



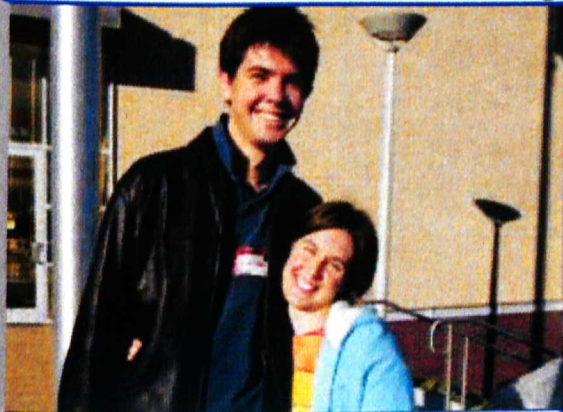
ME Stockroom: 1

Molly is a super-dancer who performs with the Babson Dance Ensemble, in addition to being an active member of SAC.

0/4

Nate Smith

0



Meeting Request — Student



ECE Stockroom: 1

Nate Smith is 6'6" and no, he does not play basketball.

0/4



Meeting Request — Student



While Jon Pollack in play, Karst may do Sarah Spence-Adams' work without taking stress.

Karst may only receive stress counters from professors.

Karst does not wear underwear.

Pearl Donohoo

0



Meeting Request — Student



*Pearl is very environmentally
conscious, and very very liberal.*

0/4

Rob Nix

0



Meeting Request — Student



When Ben Hill is in play, Rob and Ben form the ultimate sports duo giving each of them +0/+1

Rob Nix enjoys sports of all types, and especially enjoys playing football every Sunday morning.

0/3

Rob Quimby

0



Meeting Request — Student



Gamer

Rob Quimby is one of Olin's resident thespians, and enjoys bits of Asian culture.

0/3



Meeting Request — Deferred Student



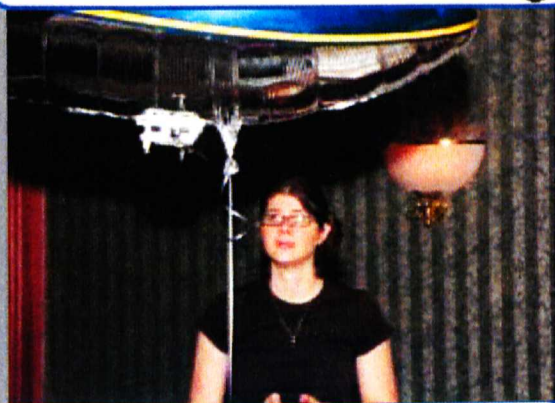
Deferred Student

When Robin enters play, you may remove any Event or Time Sink from a student you control.

Robin is an avid Rock Climber, and drives a Honda Civic Hybrid.

Sara Marshall

0



Meeting Request — Student



Cooking: 1

"Hostility is the calling card of a weak intellect."

-Ed, Edd, and Eddy

0/3

Sarah Boman

0



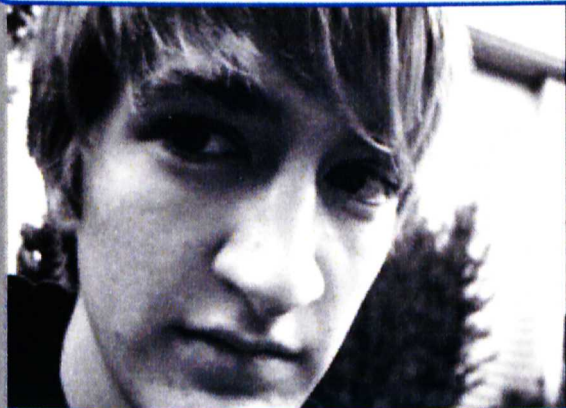
Meeting Request — Student



Sarah receives +0/+1 when the design studio is in play.

Sarah Boman enjoys design and rock climbing

0/3



Meeting Request — Student



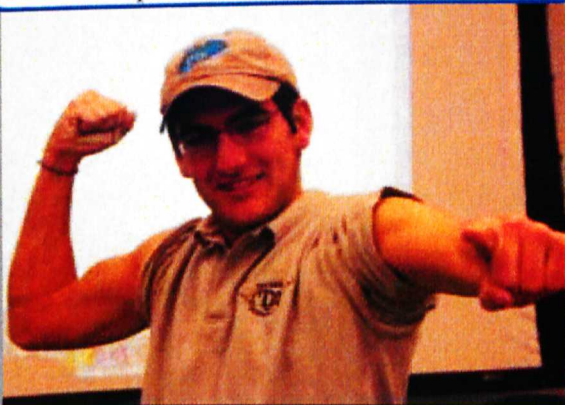
Instead of doing work, Sean can become really emo, causing two other students to not be able to do work during their next turn.

"Woe unto the foolish developer who uses tables in his layouts. I will rend him limb from limb."

**Meeting Request — Student**

Extra resources from recycling allow student to do better work. Target professor receives -1/0 until the end of the turn. Use this ability once per turn.

Simon once built a solar car in one night, machining until 5 AM, and then took a test.



Meeting Request — Student



In order to maximize any movie watching experience, Adam finds it absolutely necessary to remove his pants.



Meeting Request — Student



Ninja Conference: Once per turn, you may pay 4 sleep to search your deck for any professor and put them into play as your meeting request for the turn. Shuffle your deck afterwards.

Sensitive, fire-breathing ninjas are so rare these days.

Andrew Coats

0



Meeting Request — Student



Andrew fixes your car, allowing you to take an additional student on an Anna's Run or Smoothie Run. Whenever one of these cards is played, an additional student receives +0/+1

After bringing a third car on campus, Babo finally said 'No.'

0/3

**Meeting Request — Student**

Anne may counter an opponent's Alex Davis Special by making him order a thin crust pizza with olives, onions, and tomatoes instead.

Anne never swears, at least until she enters the ECE lab.



Meeting Request — Student



If you play 24, you may target two students instead of one.

In his spare time, he enjoys bad action movies, burritos from Anna's Taqueria, and price mistakes.

Avery Anderson

0



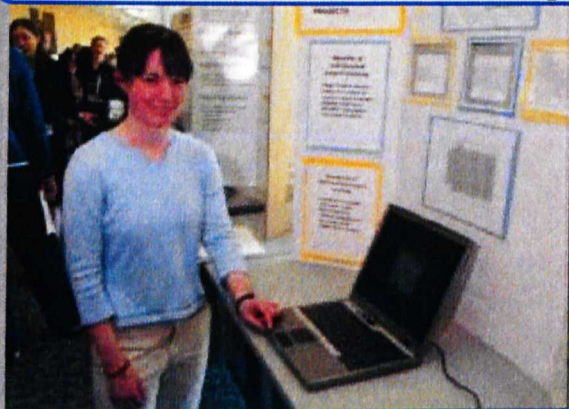
Meeting Request — Student



Instead of doing work, Avery may play frisbee with up to two other students, giving them +0/+1 for this turn.

OWNED

0/3



Meeting Request — Student



Once per turn, Becky may poke a student to prevent that student from doing work until the end of your turn.

POOOOOKE

"AIIIIIIIIIIIIIIIIIIII!"

Ben Hayden

0



Meeting Request — Student



Instead of doing work, Ben can write a Python program that will give him +0/+1 during target opponent's next turn.

"I <3 Python"

0/3

Beth Sterling

0



Meeting Request — Student



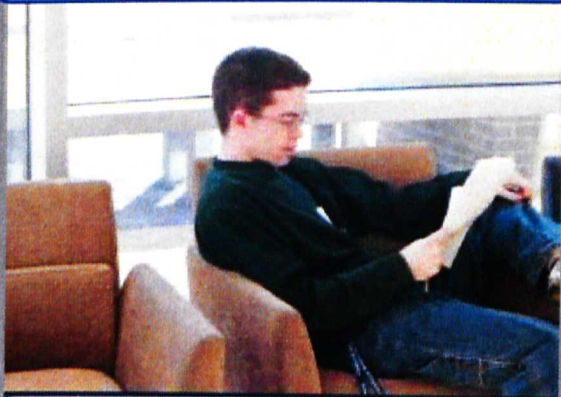
Instead of doing work, Beth may bake cookies giving up to 2 target students +0/+1 until the end of the turn.

Beth is the third generation of her family to have the initials B.S.

0/3

Brad Westgate

0



Meeting Request — Student



If the Red Sox are playing at home today, Brad can't do work. If they're playing away, he gets +0/+2.

Brad likes Warcraft and the Red Sox... A LOT

0/3



Meeting Request — Student



Brittany gets +0/+2 when any student in play is a member of the Mini Baja Team.

Brittany has one of the worst accents at Olin: a mixture between upstate New York and Texan.

Chris Dellin

0



Meeting Request — Student



When Chris comes into play, add 5 counters to Gill Pratt and lose 2 hours of sleep watching Chris be ridiculous.

Chris wants to program a robot to destroy the world.

0/3



Meeting Request — Deferred Student



Deferred Student

Upon bringing Chris into play you may search through your deck for one caffeine card and put it in your hand. Shuffle your deck.

Chris likes the lattes a latte.

Chris Stone

0



Meeting Request — Student



Chris can do work only if you control no other students.

Once on each of your turns, you may choose two of the opponents' students to be -0/-1 until end of turn.

60 warlock WTB my life back, pls

0/5



Meeting Request — Student



You may remove Doug and up to two other students from play to go on a Habitat build date.

<3 computers.

Duc Nguyen

0



Meeting Request — Student



Duc is quite the ladies' man.

0/2



Meeting Request — Student



ME Stockroom: 1

Liz is lactose intolerant, but loves chocolate, cheesecake, pizza, and string cheese. Tear.

Eric Munsing

0



Meeting Request — Student

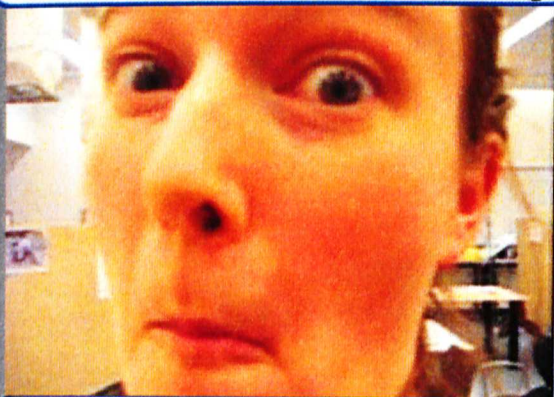


Eric gets +0/+2 when any student in play is a member of the HPV Team.

0/3

Erin Dowd

0



Meeting Request — Student



1337 crutch skillz let Erin get anywhere. When she comes into play, you may search your deck for a location and put it into play. Shuffle your deck.

Erin probably has a cousin who does anything as ridiculous, bizarre, or imaginable that you can think of professionally.

0/3

Erin Kelly

0



Meeting Request — Student



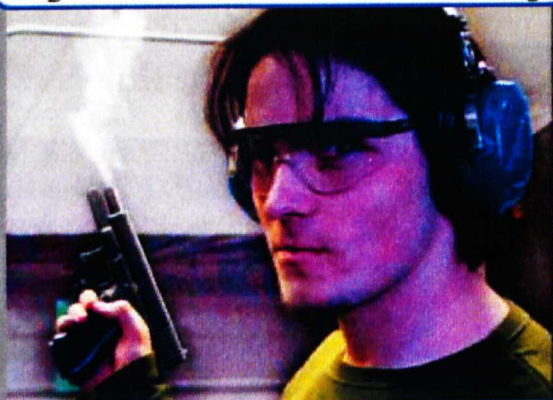
If caffeinated, Erin gets +0/+1 until she leaves play.

If you see a black hooded figure walking around campus with a scythe, it's probably Erin.

0/3

Eugene Kozlenko

0



Meeting Request — Student



This unstoppable and ridiculously good looking Rusky blew up Chernobyl at the age of three because it said he couldn't hold his vodka.

0/3

**Meeting Request — Student**

At the start of your turn, place a counter on Ginneh. At any time, remove 4 counters to have Ginneh stop time, giving her +0/+3 until the end of the turn.

If Ginneh had a superpower, she would be able to stop time. Unfortunately, she wouldn't be immune to her own power.

**Meeting Request — Student**

Flip a coin above the playing surface until it lands on an active card. That card and all of its effects are disabled for the duration of the turn. If Gui disables himself, put him to sleep.

"Exploding Vanilla Coke bottles, human-powered walking machines, and professors reciting 'Badger Badger Badger' as a radio play. Weird stuff goes down when Gui gets that look in his eye."

Jared Frey

0



Meeting Request — Student



Once per turn, Jared can poop on target student's bed, giving them -0/-2 until the end of that player's next turn.

You can't eat soup with a fork.

0/3

Jeff DeCew

0



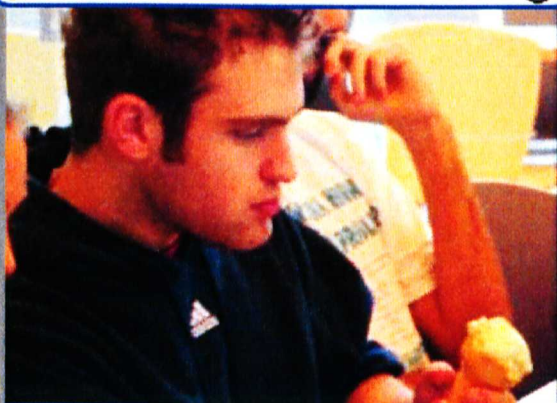
Meeting Request — Student



Jeff gets +0/+3 when the event "All-Nighter" is played.

Jeff can only work late at night.

0/3



Meeting Request — Student

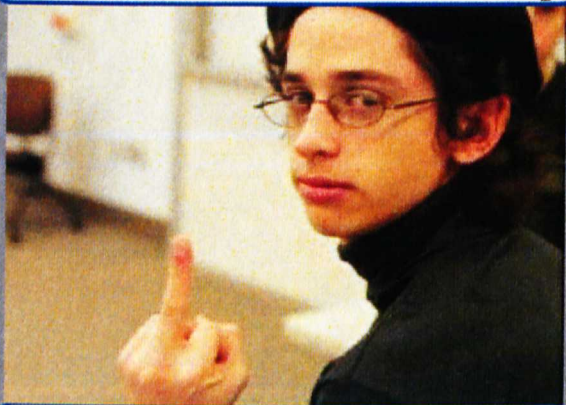


If you light your hair on fire for honor, you win the game. (Note: Olin TCG is not liable for damage to property or individuals incurred during the game)

"A revolution is a struggle to the death between the future and the past" -Fidel Castro

Jon Cass

0



Meeting Request — Student



Jon's apathy gives him +0/+3 when defending against professors with 5 or more p0wn points.

It has been said that his mathematical talents are rivaled only by his apathy.

0/3

**Meeting Request — Student**

Gamer

Jon Provo does not own a desktop computer, so every time he wants to play Counter-Strike he has to use Matt Donahoe's. In order to play, he has to type the password, "ihavenolife."

Jon Tse

0



Meeting Request — Student



Deferred Student

Overloader: 4

Hacker

Gamer

*When asked how he could do so much work,
Jon replies "IT'S ADRENALINE!!!!!!"*

0/3

Julia Buck

0



Meeting Request — Student



Instead of doing work, Julia may give target student a hug giving them +0/+1.

Rain or shine, Julia is always available to give a hug.

0/3



Meeting Request — Student



Justin receives +0/+1 when Peter Massari is in play

Justin enjoys math, music, and playing bridge.

Katie Peters

0



Meeting Request — Student



Machine Shop: 1

Katie Peters is made of poison.

0/3

Mark Cavolowsky

0



Meeting Request — Student



Machine Shop: 1

Once per turn, target student receives -0/-1 until the end of turn while laughing at Mark's ridiculous backgrounds.

Mark is the definition of tall, dark, and handsome. The 'stache just seals the deal.

0/3

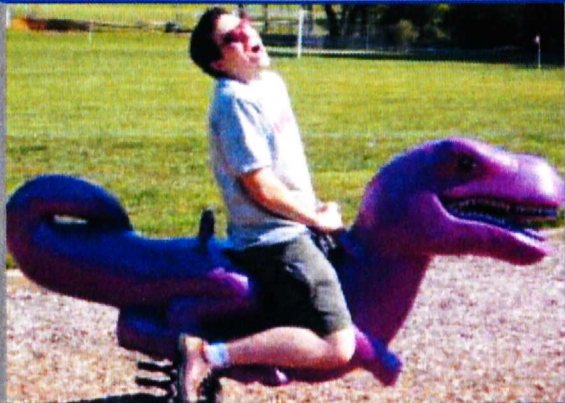


Meeting Request — Student



When Caffeine is played, Aasted causes all students receive -0/-1 until the end of the turn..

"Machiavelli makes my viscera happy."



Meeting Request — Student



When Matt comes into play, the game ends and you lose.

Matt may do work as a student and assign work as a professor.

Matt cannot be affected by events, time sinks, or abilities.

"I'm gonna put it in the bin... put it in the bin... put it in the bin... put it in the bin..."

Meenakshi Venibusubramanian

0



Meeting Request — Student



When Meena comes into play,
you may make an additional
meeting request.

"Vegan unless it tastes good"

0/3

Natalie Peterson

0



Meeting Request — Student



Once per turn, Natalie may make target student tea, giving them +0/+1 until the end of turn.

"Squeaky?!?!?!?!?"

0/3

Nick Hays

0



Meeting Request — Student



Nick Hays plays a pretty mean cello.

0/4

Nina Cary

0



Meeting Request — Student



Nina receives -0/-1 when Steve Holt is in play.

0/4



Meeting Request — Student



Once per turn, Olek prevents target student from doing work or using an ability by daring them to do something for honor.

If it's something stupid, dangerous, or potentially illegal, Olek is probably involved

Peter Massari

0



Meeting Request — Student



Peter may do work assigned by Diana Dabby in addition to work assigned by another professor. If Peter is doing work assigned by Diana, he receives +0/+3.

Peter's music is better than it sounds.

0/3



Meeting Request — Student



Instead of doing work, Ryan may hang out with target student, giving them +0/+2 until the end of the turn.



Meeting Request — Student



Instead of doing work, put up to one target student you control to sleep to return a sleeping student to play.

Sean once had cancer. He also tried being a model. Now he studies cancer models. He finds this ironic.



Meeting Request — Student



Simone once forgot her ID when flying, so she pretended to be a minor.



Meeting Request — Student



Vitriolic Hatred- At the start of your turn, place a counter on The Connor. Remove 3 counters to give target professor -1/-0 until the end of the turn.

"Hey The Connor, how did you break the couch?"

**Meeting Request — Student**

If you control an R2 at the start of your turn, put a counter on Tiana. Remove four counters to give all of your students +0/+1 until the end of your next turn.



Meeting Request — Student



At the start of each of your turns, place a counter on Aaron. At any time, remove 4 counters to wrap Aaron up in duct tape, distracting all students from doing work.

Aaron feels the need to test everything for taste, sharpness, or potential to injure.

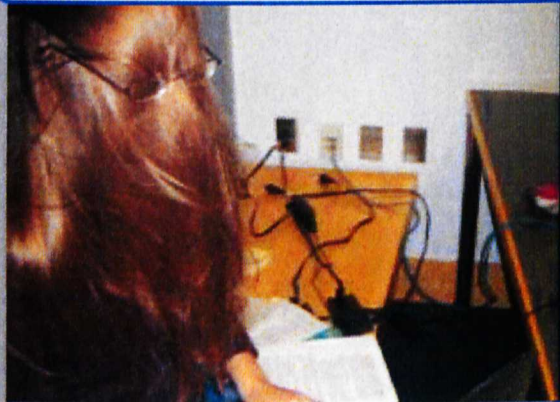


Meeting Request — Student



Put Aisaku to sleep to prevent a meeting request from being cancelled.

Aisaku takes pride in the fact that his computer is named Sally.



Meeting Request — Student



At the start of your turn, declare a name for Allison. This becomes her name until the start of your next turn.

Following a long series of name battles, Allison is now known as "Kazakia" to some people.

Ana Karimi

0



Meeting Request — Student

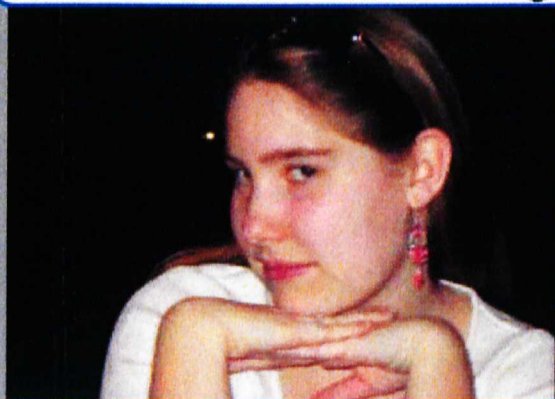


Ana loves all types of dancing, including swing dancing and belly-dancing.

0/4

Andrea Striz

0



Meeting Request — Student



Cooking

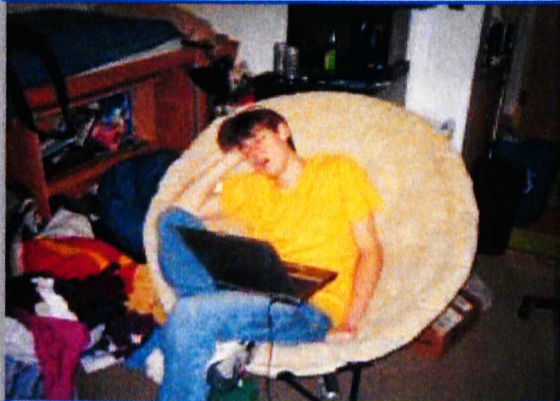
Andrea's skills include the power of the load-bearing German bar matron.

Do not mess with the bar matron.

0/4

Andrew Price

0



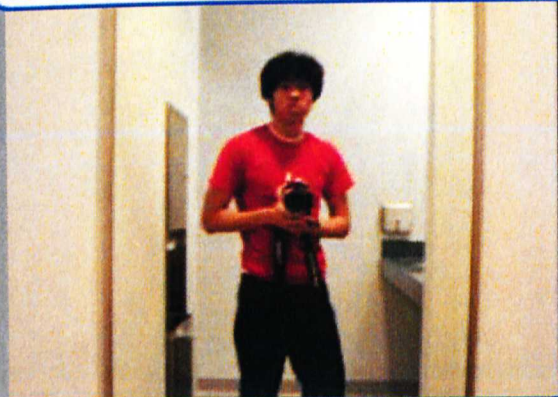
Meeting Request — Student



Andrew gains +0/+2 if you have less than 5 hours of sleep left.

Andrew is also known as "Corpse" since he never seems to sleep.

0/3

**Meeting Request — Student**

When Andrew comes into play, declare if he is to be a photographer or a student. If he is a photographer, then he may not do work, but instead takes pictures. Each turn he may prevent one student from doing work that turn.

"Sup fool?"



Meeting Request — Student



Angela sends a ridiculous e-mail to Students; all students are too distracted to do work this turn. Use this power instead of doing work.

Angela Sharer: part human, part jaguar



Meeting Request — Student



If Anna does not do work, place a counter on her. You may remove 3 counters to block an incoming assignment by means of loud British Indie Rock. This assignment does not cause any player to lose sleep.

Being a Killer, She Wanted Revenge while there was Panic(!) At the Disco...so she summoned the Yellow Submarine and Beat(led) everyone to a fine Pulp until the Kaiser Chiefs had to call an Ambulance Ltd.

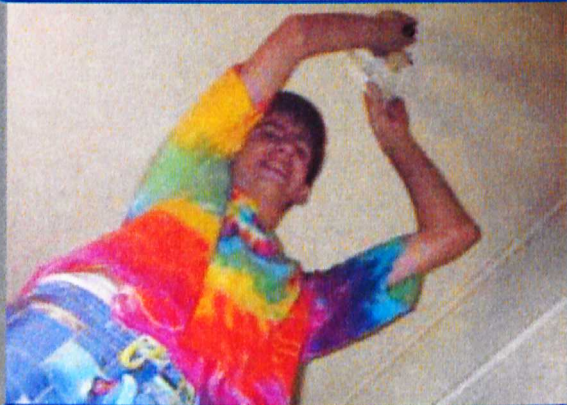


Meeting Request — Student



Ash receives +0/-1 if a classroom is in play but +0/+1 if any other location is in play

Ash is flammable when exposed to Northern Mexican Food.

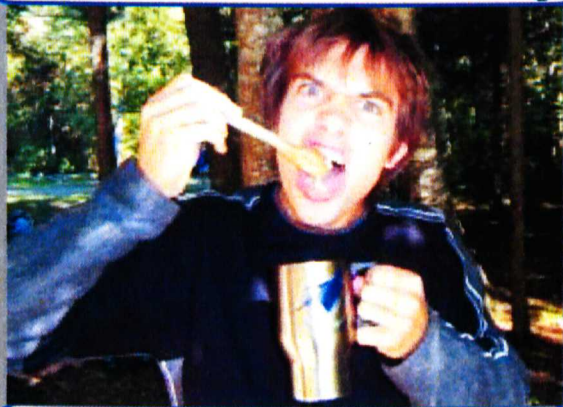


Meeting Request — Student



Instead of doing work, Ben may give you one hour of sleep by helping with math homework.

Ben strongly believes that math should be in color.

**Meeting Request — Student**

At the start of each of your turns, name a student in play. Until the start of your next turn, Bennett receives that student's special ability.

"Are you sure this shot has enough of me?"

Bonnie Charles

0



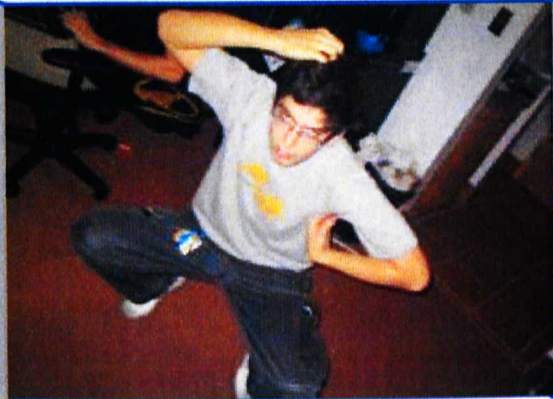
Meeting Request — Student



When Bonnie Charles comes into play
gain 1 hour of sleep for each student you
control.

*Bonnie's backrubs and warm brownies
refresh those around her, giving them
more energy to finish their work.*

0/2



Meeting Request — Student



Gamer

When Boris is in play all students get -0/-1.

By measuring the sound levels of Boris's voice, you can create a 3D map of the Olin Campus.



Meeting Request — Student



Instead of doing work, Bryn may sing to one student removing 1 stress counter from them.

Sings. Bounces. Giggles profusely.



Meeting Request — Student



At the start of each turn, place a WTF counter on CARL!. At any time, you may remove 2 counters from CARL! to remove a counter from target student or professor.

CARL! has been known to unicycle around shouting "I want crack." It is widely believed that inside Carl's head is a random action generator.

Chester Macklin

0



Meeting Request — Student

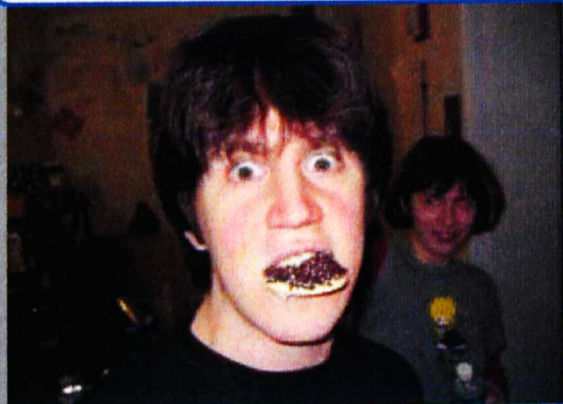


Gamer

Instead of doing work, Chester may give two students -0/-1 by doing something random.

"KAAAAAAAAAHHHHHHHN!!!!"

0/3



Meeting Request — Student



At the start of your turn, choose a student to confuse, giving them -0/-2 until the end of the turn.

Chris is the hug slut of the Class of 2009.

**Meeting Request — Student**

If you control both Clark and Gabe Greeley, you must choose one and give control of that card to any opponent of your choice. When one of the pair leaves play, the remaining member is returned to your control regardless of current controller. If both leave play, both remain in bed.

Clark and Gabe are in a perpetual prank war.

Dan Cody

0



Meeting Request — Student



The Facebook card has no effect on Dan Cody.

Dan Cody has more Facebook groups about him than any other student at Olin.

0/3

Dave Gebhart

0



Meeting Request — Student



Dave may do work as if he was more than one student. Dave receives +0/+1 for each professor he does work for until the end of the turn.

"Why do one thing well when you can do a hundred things okay?"

0/3

David Nelson

0



Meeting Request — Student

0

David spent a year in high school studying in Japan, plans to spend a semester in China, and has been granted the title of Honorary Asian.

0/4

Eamon Doyle

0



Meeting Request — Student



Eamon may give 5 stress counters, divided up among as many students as you want. After using this ability, immediately put Eamon to sleep.

Eamon is a Volvo fanatic.

0/3

**Meeting Request — Student**

When Eric is in play, if a player assigns more than 8 hours of work in one turn, they lose 2 hours of sleep.

When given a choice between work, sleep and fun, Eric will choose fun every time.

Erin Schumacher

0



Meeting Request — Student



Once per turn, Erin pokes target student into submission, giving that student -0/-1.

If Erin was a fire poker, the fire would never go out.

0/3

Francys Scott

0



Meeting Request — Student



Due to Francys's organizational skills, all students you control gets +0/+1.

Francys loves to consume her large stash of chocolate while watching old black-and-white movies.

0/3

Gabe Greeley

0



Meeting Request — Student



At the start of each turn, place a counter on Gabe. At any time, remove 3 counters from Gabe to prevent a meeting request from being made.

The source of all Ideas Stupid

0/3



Meeting Request — Student



Gavin receives +0/+1 if there is a member of the HPV team in play.

Gavin is the vegan unicycle master.

George Harris

0



Meeting Request — Student



Burnout: Give George +0/+2 until the end of the turn. On your opponent's next turn, George receives -0/-3 until the end of the turn. If James Whong also experiences Burnout, George receives +0/+3 instead of +0/+2.

Even though George did graphics for all these cards, he still couldn't make his look good.

0/4

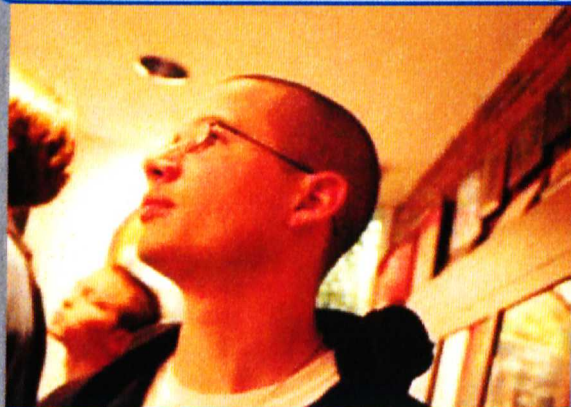
**Meeting Request — Student**

At the start of each turn, place a counter on Heather. Any time there are three counters, remove them from Heather and have her disappear until the start of your next turn. She may not do work or use a special ability while she has disappeared.

Heather mysteriously disappears from time to time.

Hector Lefbad Jr.

0



Meeting Request — Student



Gamer

When Hector comes into play, target player loses 3 hours of sleep by staying up all night and playing Super Smash Brothers with Hector.

Hector is the nerdiest gangsta ever.

0/3

Herbert Chang

0



Meeting Request — Student



Herbert receives +0/+1 for each Asian student in play.

Herbert's favorite music is Alphabet-soup pop.

0/1

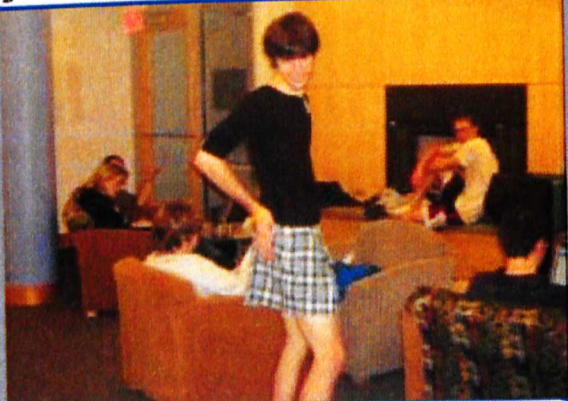


Meeting Request — Student



When Kat Kim is in play, Ike gets nervous, preventing her from being able to do work.

"Meep."



Meeting Request — Student



Instead of doing work, JP can become really emo, causing one other student to not be able to do work during their next turn.

JP is an emo poser.



Meeting Request — Student



Burnout: Give James +0/+2 until the end of the turn. On your opponent's next turn, James receives -0/-3 until the end of the turn. If George Harris also experiences Burnout, James receives +0/+3 instead of +0/+2.

*James only learns to replace what he forgets.
He learns very, very fast.*



Meeting Request — Student



Jef receives +0/+1 when a kitchen is in play. You may permanently give Jef -0/-1 to give target student +0/+1. If at any point Jef is a 0/0, put him to sleep and remove all bonuses given to other students.

Jef Gluckstein has reasonable taste.

Jessie Lin

0



Meeting Request — Student



At the start of your turn, place a hug counter on Jessie. At any time, you may remove 4 counters to have Jessie initiate a group hug, giving all students you control +0/+1 until the end of the turn.

Jessie was once half a worm with Ike :)

0/3

Jessie Sullivan

0



Meeting Request — Student



Jessie receives +0/+1 when a kitchen is in play.

"If I have to listen to you bitch, don't be surprised when I beat you to death with my shoe!"

- My Fellow Americans

0/3



Meeting Request — Student

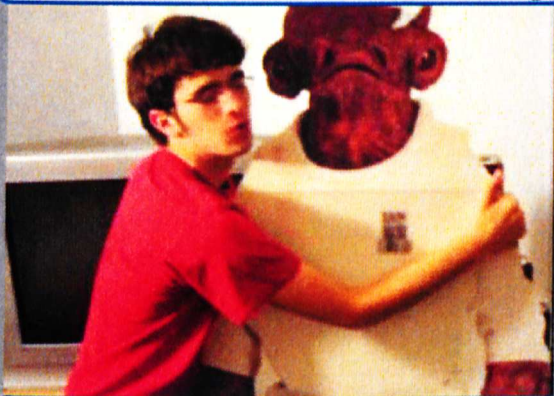


Time sinks have no effect on Joan.

At the beginning of the year, Joan had to take at least two tries to get onto her bed, often worrying her roommate with the loud "thumps".

Jobim Santos

0



Meeting Request — Student



Blue Foam Master: Jobim receives +0/+3 when a blue foam delivery is played.

Jobim: thrower of parties, maker of great Mexican food, watcher of Homestar cartoons, master of The Couches

0/3



Meeting Request — Student



At the start of your turn, place a NERF counter on Joe. At any time, remove 3 counters to stage a NERF attack on target student or professor. This distracts them, preventing them from being able to assign or do work for one turn.

Avast Mark Somerville, this lecture be over or you'll be walk'n the plank!

Joe Kendall

0



Meeting Request — Student



If both Ducker and Joe Kendall are in play, you gain control of Ducker. If Joe leaves play, return Ducker to his owner.

Joe is a Renaissance Man infatuated with the Renaissance.

0/4



JPMorgan



Meeting Request — Student

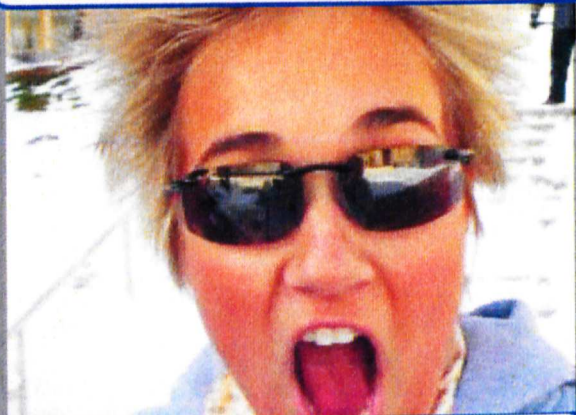


Instead of doing work, place a "moral turpitude" counter on John. At any time remove 8 counters from John to remove target professor from the game.

John had the dubious honor of Scott McClure's roommate freshman year.

Kate Miroshnikova

0



Meeting Request — Student

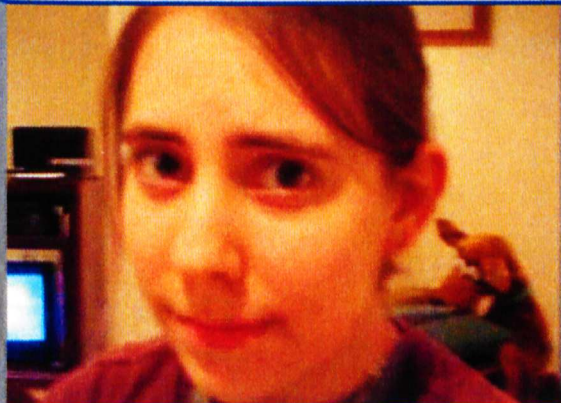
0

Kate Miroshnikova is pals with Zhenya. 'Nuff said.

0/3

Kathleen Towers

0



Meeting Request — Student

0

When Kathleen comes into play, she tunes her hereditary essential tremor to the resonant frequency of a building, causing it to explode. Destroy target location.

Kathleen aspires to be the metaphorical life-size mint milano cookie.

0/4



Meeting Request — Student



When Katie comes into play, the youngest player receives 3 hours of sleep.

Some people call Katie "minor" because she is the youngest member of the Class of 2009.



Meeting Request — Student



When Katie comes into play, her abundant energy gives you 2 hours of sleep. On your next turn, receive 1 hour of sleep.

"Why is my handle sharp?"

Kelcy Adamec

0



Meeting Request — Student



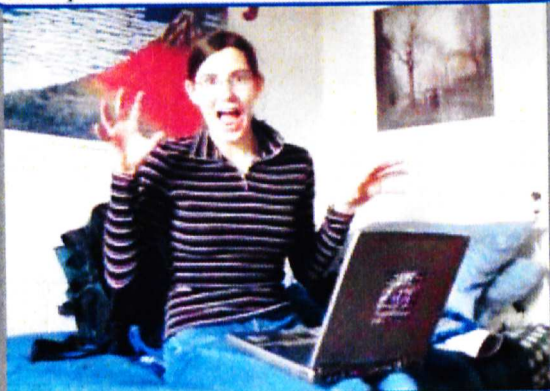
If Kelcy does not do work one turn, you lose one hour of sleep. If Kelcy does do work, target student gains +0/+1.

"My favors are worth 10,000 Oreos."

0/3

Kelly Butcher

0



Meeting Request — Student



Kelly is somehow able to carry an instrument that is twice her size.

0/4

Kent Munson

0



Meeting Request — Student



Instead of doing work, place a counter on Kent. You may remove 1 counter from Kent to draw a card, or 4 counters from Kent to shuffle your hand into your deck, and draw that many cards.

Kent, who harbors a strong Batman obsession, has the distinction of being the first sibling to enroll at Olin. "It's not that cool." - Kent

0/3



Meeting Request — Student

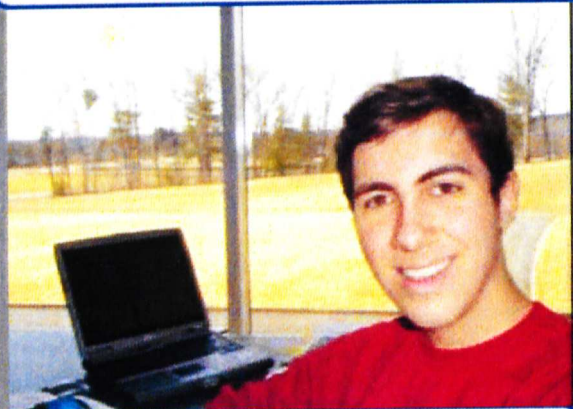


ECE Stockroom: 1

Once per turn, Kevin plays loud music on his massive speakers, causing target player to lose 1 hour of sleep.

Kevin only says something if everyone else is thinking the same thing.

Kevin Sihlanick & The Antelounge



Location

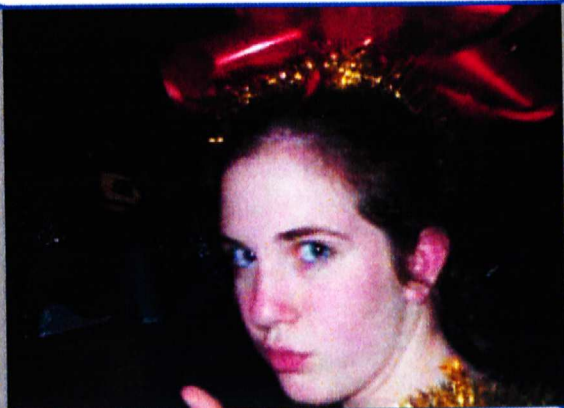


Kevin & The Antelounge are treated as a location, but may do work as a student.

*A good way to distract Kevin?
Show him a Ferrari.*

Lauren Glanville

0



Meeting Request — Student



Lauren causes everyone around her to laugh, giving all students you control +0/+1.

See Stephani Gulbrandsen's flavor text.

0/3

Leif Jentoft

0



Meeting Request — Student



Instead of doing work, Leif may play soothing music giving target student +0/+2 until the end of the turn.

"Guitar. Classical Guitar."

0/4

Leslie Velez

0



Meeting Request — Student



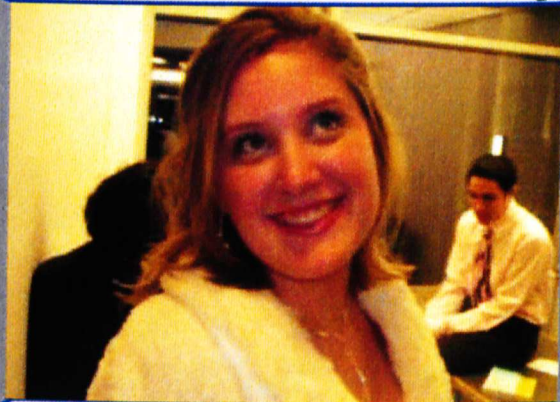
Instead of doing work, Leslie may drive target student to the store giving them +0/+2 until the end of the turn.

Leslie loves to drive.

0/3

Lyndsey Stadtnueller

0



Meeting Request — Student



Lyndsey comes into play with 6 counters. At any time, you may remove 3 counters to bring target sleeping student into play.

When sleep-deprived, Lyndsey becomes extremely eccentric.

0/4



Meeting Request — Student



If a hard drive failure deals sleep to Matt, Matt receives -0/-2 until the end of the turn.

The answer is always 7 Crawfords. The Crawford is a unit defined as 1/7 of the correct answer.

**Meeting Request — Student**

At the start of each of your turns, place a sleep counter on Matt. Whenever there are 3 counters on Matt, you must immediately remove them to give yourself 1 hour of sleep. Matt may not do work unless there is a counter on him.

Matt has slept through a bus crash, two earthquakes and a fire in his own building (don't worry it was only on the ground floor).

Matt Roy

0



Meeting Request — Student



Matt comes into play with 3 counters.
At any point, remove a counter to cause
target player to lose an hour of sleep.

*CAN 10,000 Monkeys write an
encyclopedia? See the results for
yourself: wikipedia.org*

0/3



Meeting Request — Student

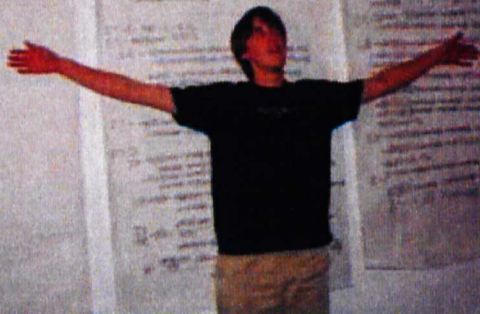


Matt comes into play with 4 counters. If any work would cause Matt to go to bed, you may remove a counter to keep him in play.

It's a nerf gun...and nothing else

Michael Boutelle

0



Meeting Request — Student



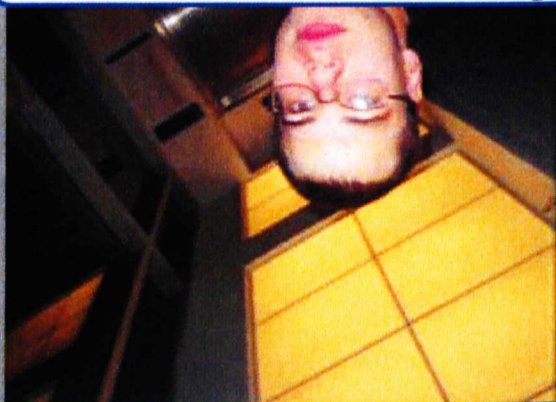
At the start of your turn, place a counter on Michael. At any point, you may remove 3 counters to have a philosophical debate with target student. That student may not do work this turn.

"Michael's dead. It's just Bootles now!"

0/3

Michael Ducker

0



Meeting Request — Student



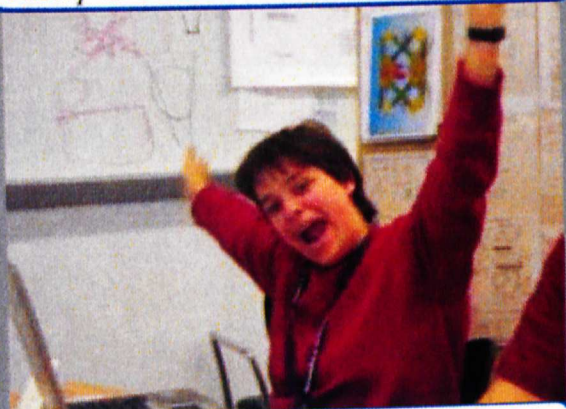
If Ducker does not do work one turn, place a party counter on him. At any time, you may remove 3 counters to remove 2 stress counters from 3 other students.

Michael Ducker got assassinated during a CORE meeting.

0/3

Molly Crowther

0



Meeting Request — Student



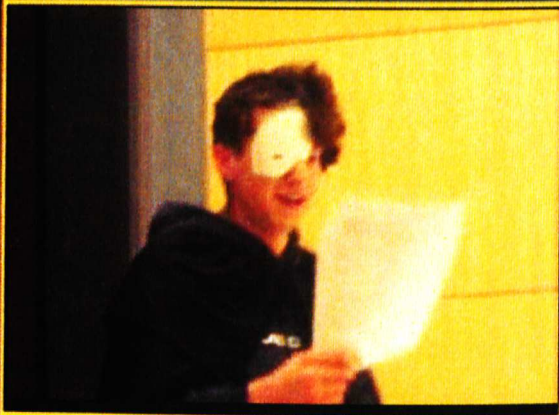
Early

Molly is the slowest girl in the world.

0/4

Nik Wittenstein

0



Meeting Request — Student



Shadow

Fear

First Strike

Flying

Nik prides himself on being different.

0/3

**Meeting Request — Student**

Paul may give permanently himself -0/-1 to give another student +0/+2 permanently. If Paul is ever a 0/0, put him to sleep and remove all bonuses. Any student who received a bonus receives -0/-1 permanently.

A body in motion tends to stay in motion...



Meeting Request — Student

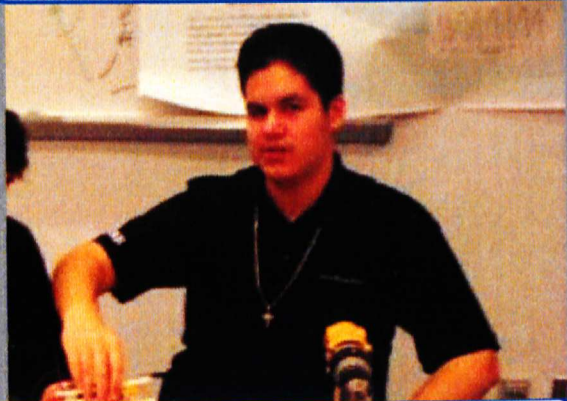


When Caity comes into play, remove one student from your bed and bring him into play.

Watch out (Insert Princess Name), Princess Caity is coming for your crown.

Roberto Santana

0



Meeting Request — Student

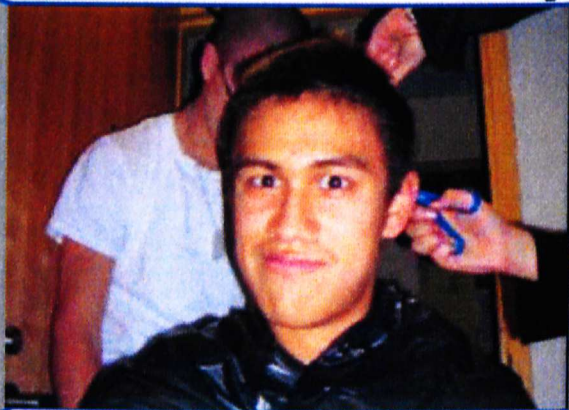


Gamer

At the start of each of your turns, place a counter on Roberto. At any time, you may remove 3 counters to host a card tournament preventing students from doing work this turn.

*Olin the TCG Gamemaster and co-creator of Olin the TCG**2*

0/3

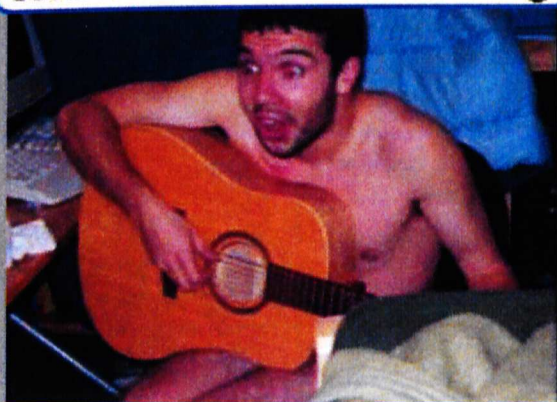


Meeting Request — Student



At the start of your turn, place a counter on Russell. At any time, you may remove 3 counters to cause target student to waste time, preventing them from being able to do work this turn.

A survey from Angela's Board: Would you rather be Hawaiian or completely ridiculous? (Is there really a difference?)



Meeting Request — Student



Scott comes into play with 6 counters. At any time remove 3 counters from Scott to prevent all students from doing work this turn.

"AAAAAAAAAAAAAAAAAARGH! x_X Excuse me while I go wash my eyes out with bleach..."

-Aaron Fenyes, on Scott's Facebook Wall

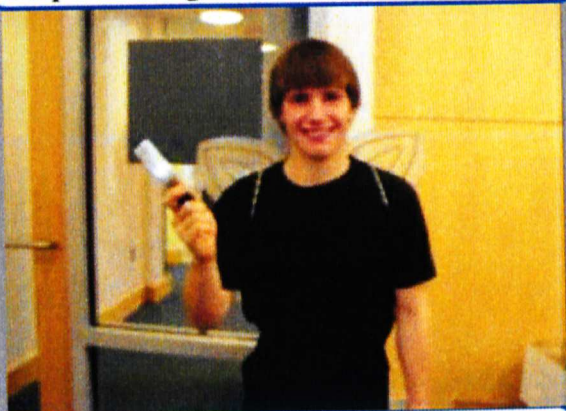
**Meeting Request — Student**

At the start of your turn, place a counter on Steph. At any point, remove 3 counters to cause target student to take a break. That student may not do work until the end of the turn. The player controlling that student receives 1 hour of sleep.

See Lauren Glanville's Flavor Text.

Stephen Longfield

0



Meeting Request — Student



Gamer

ECE Stockroom: 1

Stephen gains +0/+X until the end of turn. You lose X hours of sleep.

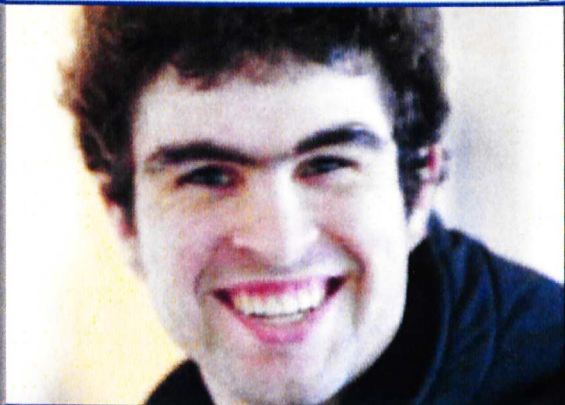
Sleep is a poor substitute for caffeine.

0/3

**Meeting Request — Student**

At the start of your turn, place a tea counter on Sylvia. At any point, remove 3 counters to make tea for two target students. Sylvia and the two students get +0/+1 until the end of the turn.

Who else would be excited about a teakettle that whistles a musical sixth?



Meeting Request — Student



Thomas comes into play with 4 counters. At the start of each of your turns, remove a counter. Thomas receives +0/+1 for each counter he has on him.

Go build it out of LEGO!

Tim Smith

0



Meeting Request — Student



*Tim was adamantly against
having an Olin TCG card.*

0/4

**Meeting Request — Student**

If Vivian doesn't do any work during your turn, place a SAC counter on her. You may remove 4 counters to throw a SAC event to give all your students +0/+1 until the end of the turn.

Official Resident of the 2N Nook.

Will Yarak

0



Meeting Request — Student



Worthwhile- All other students you control gain +0/+1 if Will is the only student you control.

One day, Will woke up and said to himself, "I wish I was Alex Dillon."

0/1

Allen Downey

4



Meeting Request — Professor



Allen does an objective reality check. At the beginning of your turn, place one counter on Allen. You may remove 3 counters to prevent one professor from assigning work for this turn.

Allen Downey is not afraid of Virginia Woolf.

4/0

Benjamin Linder

4



Meeting Request — Professor



All students you control get
+0/+1.

*Ben Linder practically lives at
Olin, and has been seen leaving
the Academic Center at 2:00 AM*

4/0

Brad Minch

4



Meeting Request — Professor



If the ECE stockroom is in play,
all students you control get
+0/+1.

*All the world's an analog stage
and digital circuits play bit parts.*

4/0

Brian Bingham



Meeting Request — Professor



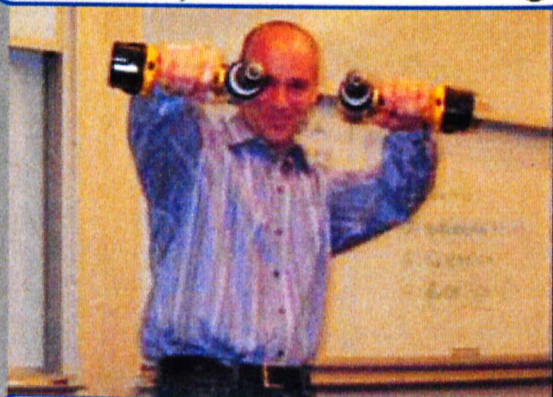
Feedback: 2

Brian Bingham is an avid cyclist and enjoys surfing.

4/0

Brian Storey

4



Meeting Request — Professor



At the beginning of your turn, place a caffeine counter on Brian. You may remove 4 caffeine counters to give yourself 1 hour of sleep.

Rarely seen without a cup of coffee in his hand, Brian Storey lives on caffeine.

3/0



Meeting Request — Professor



Mandatory Work

Instead of assigning work, Burt may cause target player to lose 1 hour of sleep by assigning a problem set.

Qui s'excuse, s'accuse.

Caitrin Lynch

4



Meeting Request — Professor



Feedback: 4

Caitrin gets +1/+0 if Rob Martello is in play by creating the ultimate AHS alliance.

Caitrin spent a year and a half in Sri Lanka doing her graduate work.

4/0



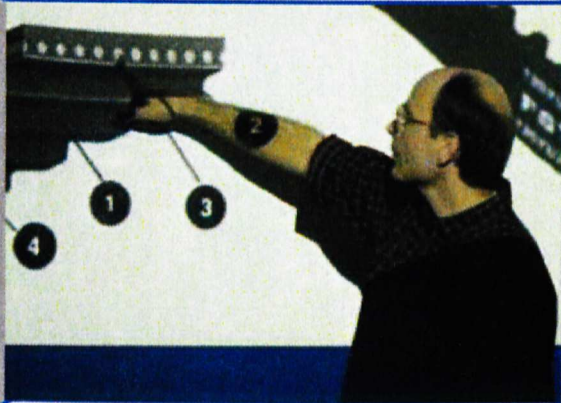
Meeting Request — Professor

Instead of assigning work, Chris may prevent target professor from assigning work until the end of your next turn.

Even though he is small of stature, he can make even the largest man giggle like a school girl.

Dave Barrett

4



Meeting Request — Professor



Dave receives +1/+0 when the Robotics Lab is in play.

Dave Barrett is working on the centaur, a hybrid between a humanoid robot and a 6-wheeled platform.

3/0

Debbie Chachra

4



Meeting Request — Professor



At the beginning of your turn, place one counter on Debbie. Instead of assigning work, you may remove 5 counters to return one student to play from your bed.

"Zed = Zeel!"

3/0

**Meeting Request — Professor**

At the start of each turn, place a counter on Diana. When Diana assigns work, you may remove **X** counters to give her **+X/+0** until the end of the turn.

Diana Dabby is an accomplished pianist as well as an ECE professor.

**Meeting Request — Professor**

When Gill is brought into play, all players must say "Hi Gill."

At the beginning of your turn, Gill integrates 1 counter. By using spiral learning, you may remove $1.5 * \text{floor}(\exp(2) + \pi)$ counters to win the game.

"That's great!"



Meeting Request — Professor



At the start of your turn place a counter on Professor Donis-Keller. Instead of assigning work you may remove three counters to give target professor +2/+0.

Helen Donis-Keller is often seen around campus with her dog named Par-Par.

Jessica Townsend

4



Meeting Request — Professor



Feedback: 3

*Jessica can talk to you
about the weather in Gaelic.*

4/0



Meeting Request — Professor

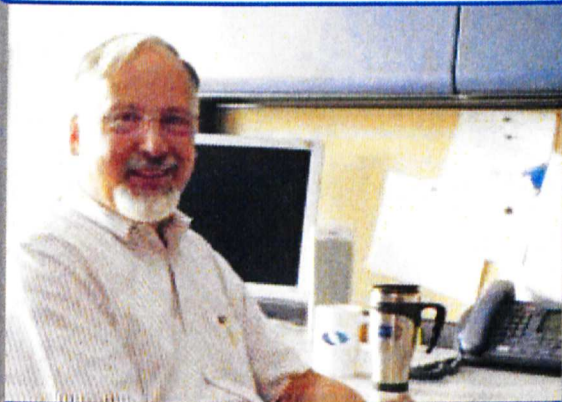


When Joanne is in play none of your students may be affected by the flu or the illness.

Joanne's favorite cell line is jurkat and she named her cat jurkat.

John Bourne

4



Meeting Request — Professor



When Steve Schiffman is in play,
John Bourne gets +1/+0.

*In addition to teaching, John
Bourne directs the Sloan Center
on Online Education at Olin.*

3/0

John Geddes

4



Meeting Request — Professor



Early

When John comes into play,
you gain 1 hour of sleep.

"If it isn't Scottish, it's crap!"

3/0

Jon Stolk

4



Meeting Request — Professor



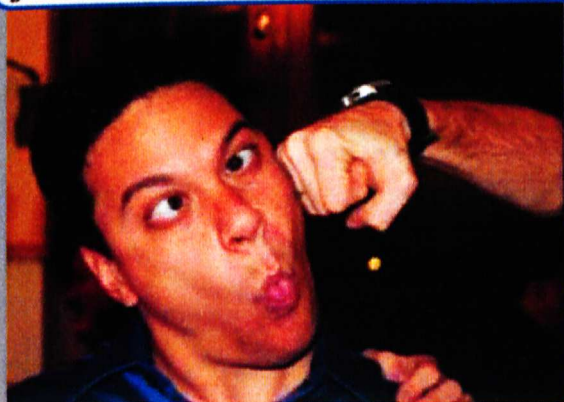
Jon gets +1/+0 when the
MatSci lab is in play.

*Jon Stolk is everybody's
fashion idol.*

4/0

Jose Oscar Mur-Miranda

4



Meeting Request — Professor



Puerto Rican

"I'm Puerto Rican. That means I'm immune to poison, knives, and bullets."

3/0



Meeting Request — Professor



Lynn Andrea Stein receives +2/+0 when the ACL is in play.

All hackers receive +0/+1 when Lynn Andrea Stein is in play.

Lynn Andrea Stein does not know why she has a moose on her bookshelf, but she is certain that there is a good story behind it.

Mark Chang

4



Meeting Request — Professor



All students you control get +0/+1.

Mark gets +2/+0 when the ACL is in play.

"Hit the go button! It's time for the Mark Chang Show!"

-Kristen Dorsey

4/0



Meeting Request — Professor



Feedback: 3

Mark Somerville, now a professor of Physics and Electrical Engineering, considered dropping out of graduate school to become a cook.

Michael "Dr. M" Moody



Meeting Request — Professor



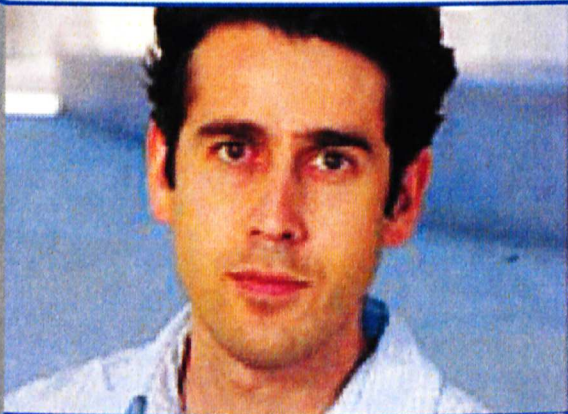
At the beginning of your turn, put a counter on Dr. M. During your turn, you may remove 5 counters to take control of one professor from another player for that turn.

"I can juggle 187 objects simultaneously. All dropped objects get replaced by different ones!"

5/0

Özgür Eris

4



Meeting Request — Professor



Early

Feedback: 1

Özgür Eris recently came from Stanford to teach design classes at Ölin.

4/0

Rebecca Christianson

4



Meeting Request — Professor



At the start of your turn, declare a student to get +0/+1 until the beginning of your next turn.

Rebecca frequently drives 2.5 hours to have pancakes for breakfast in northern New Hampshire before hiking in the White Mountains.

3/0



Meeting Request — Professor



Feedback: 4

Rob gets +1/+0 if Caitryn Lynch is in play by creating the ultimate AHS alliance.

"I'm the Wizard of AHS"

Sarah Spence Adams

4



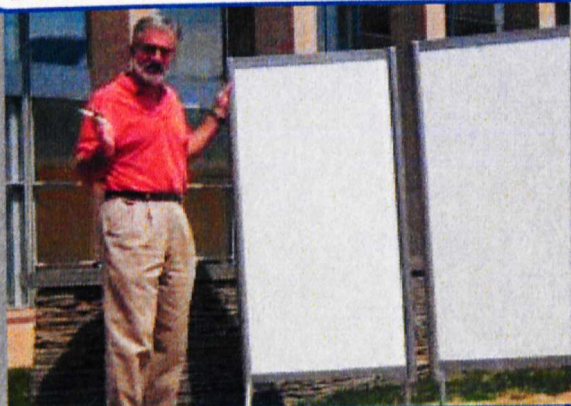
Meeting Request — Professor



Encrypt another professor's work so that it cannot be done by students. Use this ability instead of assigning work.

If she told you what she has done for various governmental agencies, she would have to kill you.

4/0



Meeting Request — Professor



Assigns individual work - because he moves near the speed of light.

Renowned astrophysicist and former Director of Space Sciences at NASA's Goddard Space Flight Center, he came to Olin to get his face on this card



Meeting Request — Professor

If John Bourne is in play, Steve Schiffman gets +1/+0.

Steve Schiffman still uses a fountain pen, mechanical watch, and does not have a cell phone.



Meeting Request — Professor



Mandatory Work

Instead of assigning work, Zhenya may cause target player to lose one hour of sleep by assigning a problem set.

Zhenya's Espresso acts are always well anticipated.

**Event**

Put target student to sleep.

" I have killed two people since midnight. I haven't slept in over 24 hours. So maybe you should be a little more afraid of me than you are now. "

-Jack Bauer

ABET Visit



Event



Remove target Professor from the game.

Olin is looking forward to becoming a "real school" after it is accredited.

Alarm Clock Failure



Event



Put target student to sleep.

Sometimes your alarm clock has a mind of its own.

Alex Davis Special



Event



Gain two hours of sleep from eating the cheesy goodness of the Alex Davis.

"I'd like a 5-5-5 with 3 Alex Davis Specials"

Anna's Run



Event



Up to two target students (three if you control Anthony Roldan) get some awesome burritos and quesadillas and get +0/+1 until end of turn.

Anna's Taqueria is a favorite of Olin students for its good food and low prices

BSOD

A problem has been detected and Windows has been shut down to prevent damage to your computer.

A process or thread critical to system operation has unexpectedly exited or been terminated.

If this is the first time you've seen this error screen, restart your computer. If this screen appears again, follow these steps:

Check to make sure any new hardware or software is properly installed. If this is a new installation, ask your hardware or software manufacturer for any updates updates you might need.

If problems continue, disable or remove any newly installed hardware or software. Disable any memory optimization such as caching or shadowing. If you need to use safe mode to remove or disable components, restart your computer, press F8 to select advanced startup options, and then select safe mode.

Technical information:

*** STOP: 0x0000000A (0x0000000A, 0x00000000, 0x00000000, 0x00000000) ***

beginning of physical memory:

physical memory dump complete

contact your system administrator, your technical support group or Dell sales for further assistance.

END

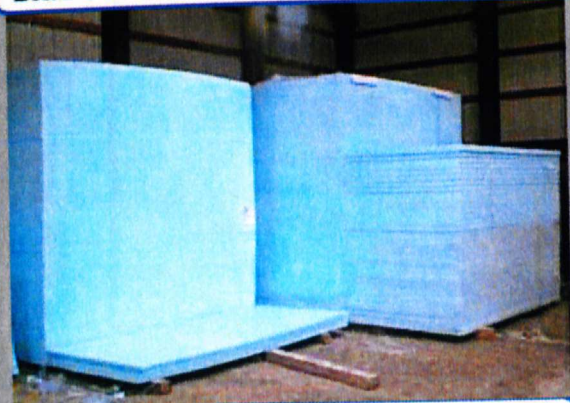
Event



Prevent one Meeting Request from being made.

Blue Screens of Death always seem to visit right before that term paper is due.

Blue Foam Delivery



Event

A shipment of Blue Foam arrives.
Target student receives +0/+1 until the beginning of your next turn.

It is safe to say that every Olin Graduate will have a firm understanding of how to use blue foam to do anything.

Boring Lecture



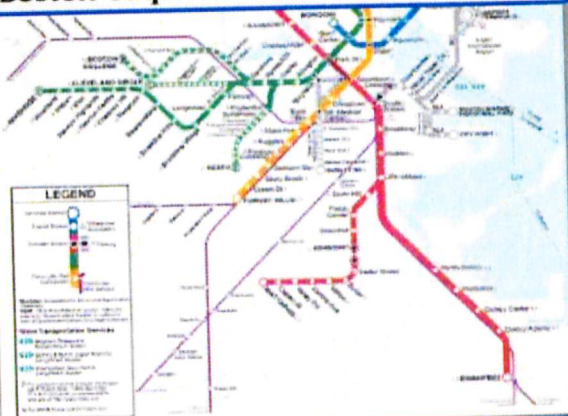
Event



Put target student to sleep

Even the best of students will succumb to falling asleep.

Boston Trip



Event

Three students may not do work this turn. At the start of the player's next turn, they receive +0/+1 for that turn.

A trip into Boston might eat up some of your time, but the amount of stress it relieves makes it all worth it.

Caffeine



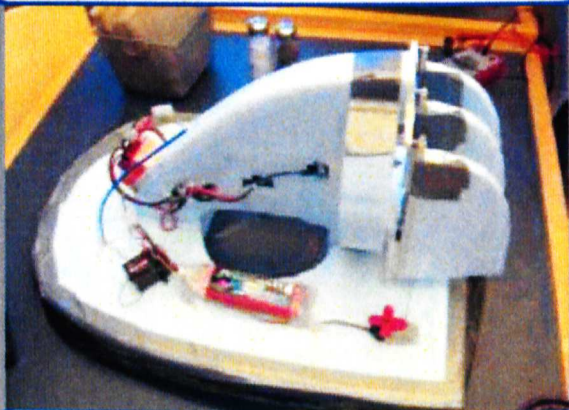
Event



Target student gets wired and returns to play from bed.

*Only two things at Olin are constant: **Work and Caffeine***

Design Challenge



Event



Target student builds a hovercraft over the weekend and gets two stress counters.

Design Challenges offer mechies a chance to flex their blue foam cutting skills.

Desperate Housewives

DESPERATE HOUSEWIVES



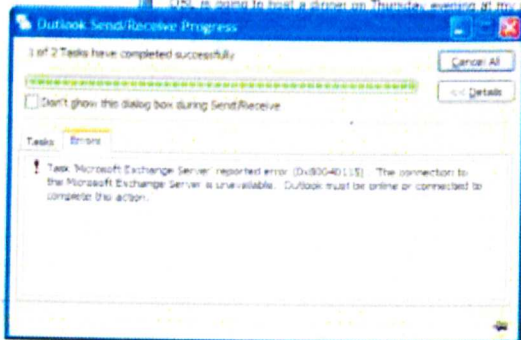
Event



Prevent target student from doing work this turn.

The popular soap opera that shows that the lives of housewives aren't as they seem.

Exchange Server Down

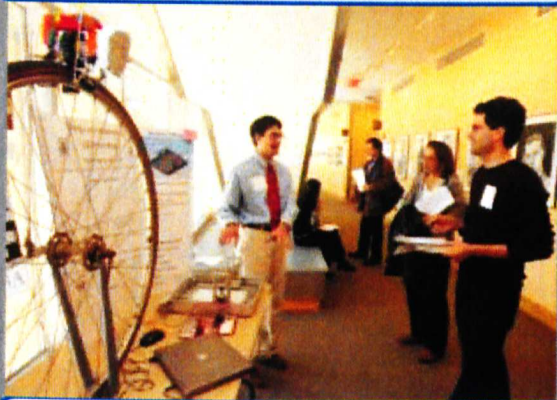


Event

Prevent one Meeting Request
from being made.

*"But, without Outlook my life is
meaningless!"*

Expo



Event



No students may do work until the start of your next turn.

"Do you know where your mini-expo poster is? I just spent two hours attempting to mediate between six 2nd grade drama queens. Don't increase my stress level any further."

-Mark Somerville

Facebook



Event



By using a Facebook message, you may make an additional meeting request this turn.

Finally, Olin students no longer had to be a part of the "I actually go to Olin" group.

Forgotten Birthday



Event

Put target student to sleep.

"What... You forgot my aunt's ex-husband's birthday?!?!"

Remove 2 stress counters from up to 2 target students.

"What are we going to do tonight, Brain?"

"The same thing we do every Tuesday night, Pinky: go out to the soccer field and wrestle in the snow."

-Bonnie Charles

Put target professor

to sleep.

Gang Wars



Event



Remove 2 stress counters from up to 2 target students.

"What are we going to do tonight, Brain?"

"The same thing we do every Tuesday night, Pinky: go out to the soccer field and wrestle in the snow."

-Bonnie Charles

Grant Proposal

Discover the secrets of winning proposals
and get the funding you need!



Visit us at
dummies.com

Grant Writing FOR DUMMIES

Event



Put target professor to sleep.

Hard Drive Failure



Event



Target student's hard drive fails, preventing them from being assigned any work this turn.

The modern version of "My dog ate my homework."

Katamari



Event



Put target student to sleep.

"Not this game again!"

Lenning



Event

All students you control gain +0/+1 until the end of the turn.

"All good things must come to an end"

RIP- December 2005

Lost



Event



Prevent target student from doing work until the start of your next turn.

"You want your damn thirty dollars back? I want my kidney back!"

-Locke

Lost Prox Card



Event



Remove target location from play.

With your Prox Card, Olin is at your fingertips, but without it...

Mr. Wiki



Event



Up to two target students receive +0/+1 until the end of the turn from the awesomness of the bunny with a pancake on its head.

From: Elizabeth Kneen

To: Jonathan Chambers, Students, Faculty, Staff

Subject: RE: MrWiki is back!

this calls for a partay!

Nyquil

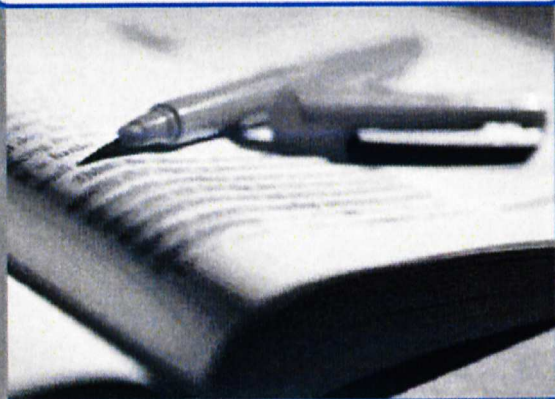


Event

Put target student to sleep.

Drugs are good.

OSSISURB Grant



Event



Search your deck for any Time Sink, Event, or Location card and reveal that card to all players. After putting the card in your hand, shuffle your deck.

Olin recently won a nationwide award for having the longest acronym.

Olin Challenge



Event



You may play an extra student this turn. If another player plays a student during their turn, put both students to sleep.

Your mission, if you choose to accept it, is to leave Olin's campus and return without seeing any other Olin Student.

Problem Set



Event



Target student is assigned 3 work (5 if you control Burt Tilley). Ouch.

Burt and Zhenya problem sets were known to fill entire classrooms of whiteboards with equations.

SCOPE

SCOPE

Senior Consulting
Program for Engineering

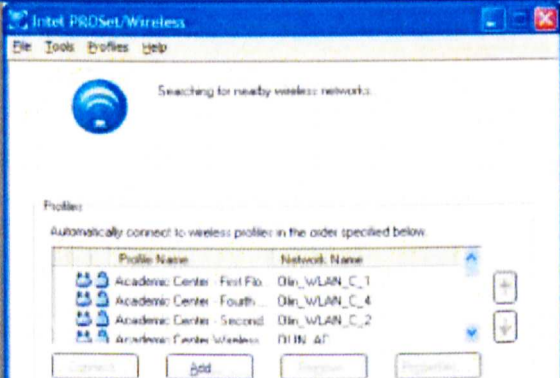
Event



Put four students to sleep,
including one of your own.

*SCOPE, Olin's senior design
project, tests all of the student's
limits.*

Scheduled Network Maintenance

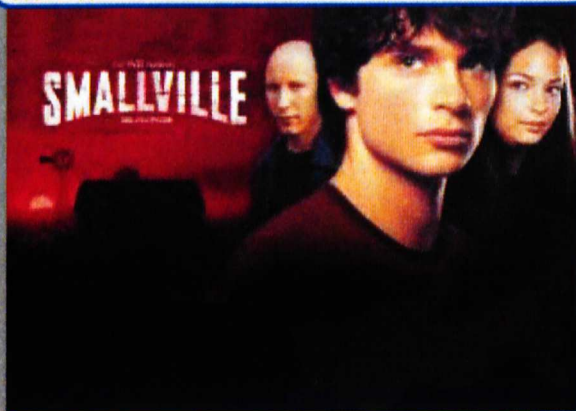


Event

Due to network maintenance, no meeting requests may be made this turn.

IT will be performing an Upgrade to the Wireless switch infrastructure with the help of Nortel support on Thursday March 23rd between the hours of 10 am to 5 PM....Thank you for your understanding in this matter.

Smallville



Event



Target student may not do work this turn.

"Before he was Superman, he was just a boy with extraordinary abilities"

Smoothie Run



Event



Up to two target students drink some liquid goodness and get +0/+1 until end of turn.

Mmm... smoothies!

Snow Day



Event



Professors cannot get to Olin. No work may be assigned this turn.

Being in Massachusetts has its advantages.

Stargate SG-1



Event



Target student may not do work this turn.

"Well, I suppose now is the time for me to say something profound... Nothing comes to mind."

-Jack O'Neill

The Flu



Event



The flu strikes the dorms, and no students can do work until the end of your next turn.

Because of the tight-knit community, disease, just like gossip, spreads almost instantly.

The Game

The Game

Event



You lose the game (not Olin
TCG... the other game).

"I just lost!"

The OC



Event



Put target student to sleep.

*"It's nothing like where you live.
And nothing like what you
imagine."*



This is the key we found
We found it in the grass

Event



Search your deck for a card. Put that card in your hand. Shuffle your deck.

*"This is the card we found
We found it in your deck."*

Wendy's Run



Event



Give 3 students +0/+1 for one turn.

Wendy's might be the only place within an 8 mile radius of Olin that is open after 10:00 PM.

World of Warcraft



Event

Put target student to sleep right now. At the start of your next turn, put another student to sleep.

It's like crack... only legal.

[HelpMe] Message

	@ Kelly Ada...	FW: [helpme] T Ride	Sun 3/19/20...
	@ Kelly Ada...	[helpme] T Ride	Sun 3/19/20...
	Kristina Cary	RE: [helpme] AAA Batteries [RESOLVED]	Sun 3/19/20...
	@ Kristina Cary	[helpme] AAA Batteries	Sun 3/19/20...
	@ Boris Dese...	[helpme] Stamps resolved	Sun 3/19/20...
	@ Kristina Cary	[helpme] Ride to Eliot	Sun 3/19/20...
	@ Boris Dese...	[helpme] Stamps?	Sun 3/19/20...
	@ Andrew T. ...	[helpme] VPR Maximum Sessions? - RESOLVED	Sat 3/18/20...
	@ Jonathan ...	[helpme] Defining Python "in"	Sat 3/18/20...
	@ Eric J. Van...	[helpme] Backpack?	Sat 3/18/20...
	@ Andrew T. ...	[helpme] Circuits Models	Sat 3/18/20...
	Michael Du...	[helpme] Ride to the T	Sat 3/18/20...
	@ Soupin	[helpme] RESOLVED Re: Another T ride...	Sat 3/18/20...
	Soupin	[helpme] Another T ride...	Fri 3/17/200...
	@ Aaron Pet...	[helpme] jacket?	Fri 3/17/200...
	Nikolaus W...	[RESOLVED][helpme] Book Recycling	Fri 3/17/200...
	@ Nikolaus W...	[helpme] Book Recycling	Fri 3/17/200...
	Herbert Ch...	[helpme] \$2 in 4th Laundry Room	Fri 3/17/200...
	@ Nicholas W...	[helpme] Ride to T	Fri 3/17/200...

Event



Take control of one student from target player until the end of their next turn. If this student is sent to bed, return the student to its owner. Draw a card.

You never know what you might find when you send out a HelpMe.

[Randomness] Message

Jay Gantz	Sun 7:31 PM
RE: [Randomness] Caption Contest	
Nicole Hori	Sun 7:18 PM
[Randomness] Craigslist	
Louise Gineh Cornelius	Sun 7:10 PM
[Randomness] Caption Contest	
Daniel J. Gallagher	Sun 6:52 PM
[Randomness] mac & cheese in east hall kitchen	
Jessica Sullivan	Sun 5:56 PM
[Randomness] Darwinism at minor league money drop	
Mark M. Penner	Sun 4:21 PM
RE: [Randomness] Caption Contest	
Paul Mandel	Sun 3:30 PM
[Randomness] Cheap Student Airfares	
Kevin Tostado	Sun 2:47 PM
[Randomness] Play Catch?	

Event

Target student gets distracted by Randomness, making them unable to do work this turn.

Randomness: serving all your random needs.

AIM



Time Sink

Target student you control cannot be assigned work. All other students you control get +0/+1.

"AOL System Messenger: Your account is signed into AIM in 2 locations."

Club: Franklin W. Olin Players



FWOP

Time Sink

Target student joins FWOP giving them -0/-1. At the start of each turn, place a counter on target student.

FWOP works to produce quality shows each year.

Club: Frankly Speaking

FRANKly
spEaKiNG

uncommon news for an uncommon school

Time Sink



Target student joins Frankly Speaking and receives -0/-1. At the start of each of your turns, draw an extra card.

"Uncommon news for an uncommon school"

Club: Mini Baja



Time Sink



Target student joins Mini Baja, giving them -0/-1.

Mini Baja works each year to build a vehicle for a race.

Club: Olin Dance Project



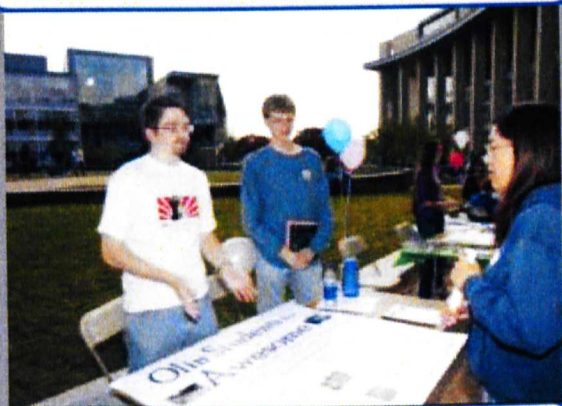
Time Sink



Target student joins ODP, giving them -0/-1. At the start of each of your turns, draw an extra card.

ODP's mission is to expose the Olin community to social dancing.

Club: Olin Students for Awesome



Time Sink



Target student joins OSA, giving them -0/-1.
Each turn you may give up to 2 students +0/+1
until the end of the turn by doing Awesome.

*Olin Students for Awesome gathers students
together to make a difference in the world with
engineering.*

Club: Open



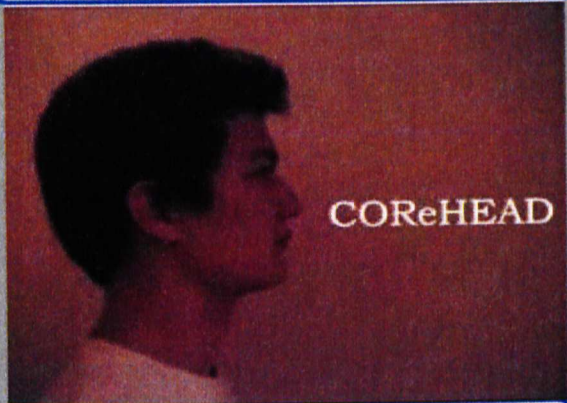
Time Sink



Target student joins Open, giving them -0/-1.
Place a counter on this student each turn.

Open seeks to promote awareness and openness toward all lifestyles and sexual orientations, and to foster a safe and supportive environment for all members of the Olin community.

Committee Member



Time Sink



Target student becomes a committee member giving him -0/-2 but allowing him to give target player one hour of sleep each of your turns instead of doing work.

"I thank God for every day he gives me in CRe. Hooah!"

-Tommy Cecil, in CReHEAD

Google NINJA

Google™

Web Images Groups News Eroogle Local more »

fork in lung

Google Search Im Feeling Lucky

Advanced Search
Preferences
Language Tools

New! [Google Finance](#) Business info, news, and interactive charts

[Advertising Programs](#) - [Business Solutions](#) - [About Google](#)

©2000 Google

Time Sink



Place this card on target student. At the start of each of your turns, draw a card. If the student this card is played on goes to sleep, remove this card from the game.

Google knows!

Illness



Time Sink

Target student gets sick and can't be assigned work. Put three counters on them. At the end of each of your turns, remove one counter. Remove this card when there are no counters.

Getting sick sucks.

NINJA



Time Sink

Target student gets $+X/+0$, where X is the number of work-fu points they have. They can assign work like a professor but remain a student. If a second NINJA card is placed on a student, this student goes to sleep.

1. *Ninjas are mammals.*
2. *Ninjas fight ALL the time.*
3. *The purpose of the ninja is to flip out and kill people.*

-<http://www.realultimatepower.net/>

Pass / No Credit

College of Engineering

Pass / No Credit
Option

Up to 12 credits of a student's credit requirements may be satisfied by taking classes that are usually offered for such classes, a Pass is given for performance equivalent to a grade of C- or higher. Courses taken Pass/No Credit course requirements unless the course is not offered for grades (e.g., first-semester freshman PE101). Only offered Pass / No Credit and Independent Study opportunities do not count towards the 12 credit limit.

Pass/No Credit grading option by the end of each semester. Consult the calendar at www.coe.edu for exact dates. Credit option does not impact the GPA, either Pass or No Credit will appear on the transcript. Once a student is No Credit, he or she cannot revert back to receive a better grade.

This option applies to CIE courses and not SEFY courses. If you would like to use a similar option for a SEFY course, regulations of the host school. If you are approved for a Pass / No Credit option at the host school, please Registrar at CIE for processing.

To use this option, consult with your advisor and complete the information below. Your request must be signed by you, processed at the Student Accounts and Records Center, 3700 Lake Campus Center, before the due date.

First Name _____

Middle Initial _____

Surname _____

Signature _____

Time Sink



Target professor may assign no work.

Just in case the class isn't going so well, there is always "Pass/No Credit"

R2



Time Sink



Target student becomes an R2.
All students who belong to that
player receive +0/+1.

*Resident Resources play an
important role in student life.*

Video Game Release



PRESS START BUTTON

TOAPLAN

ORIGINAL GAME

© TOAPLAN Co., Ltd. 1991

Time Sink



Target student loses all self-control and can no longer be assigned work. If that student is a gamer, their controller loses 1 sleep at the end of each of their turns.

All your base are belong to this game.

ACL



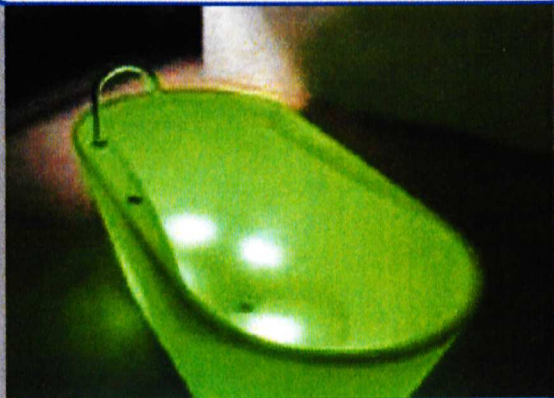
Location — Classroom



All Hackers get +0/+1.

The ACL is the computing resource that's designed to be "set on fire" when people are working on unstable projects. C'mon — show us what you've got. We're nice; we promise.

Bathtub



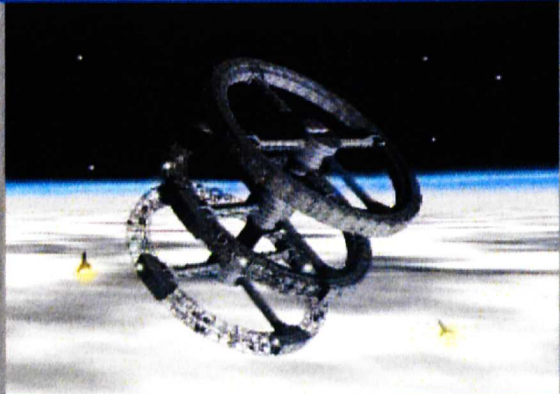
Location



At the start of each of your turns, integrate a counter into the Bathtub. At any time you may remove 4 counters to gain one hour of sleep.

So you've got this bathtub, right...

Building B



Location — Legend



Building B has finally been completed. All students get +0/+2.

"I thought it was just a legend"

ECE Stockroom



Location — Stockroom



From 0.47F AeroGel capacitors to car-battery-sized capacitors rated for 2 kV, the ECE stockroom will shock and amaze you.

East Hall Kitchen

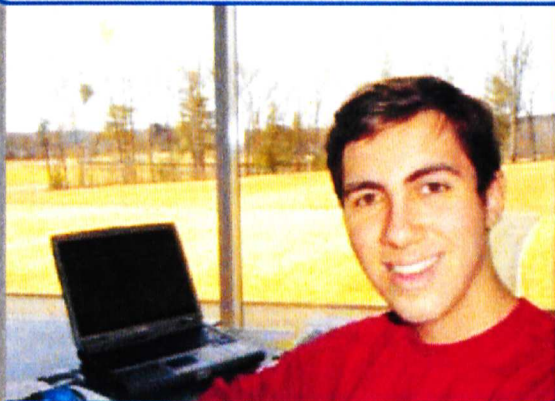


Location — Facility



The East Hall kitchen, unlike other "kitchens" in the dorms, was actually designed to be a kitchen.

Kevin Sihlanick & The Antelounge



Location



Kevin & The Antelounge are treated as a location, but may do work as a student.

*A good way to distract Kevin?
Show him a Ferrari.*

ME Stockroom



Location — Stockroom



You're sure to be stuck on the ME Stockroom with its 10 different types of superglue.

Machine Shop



Location — Classroom



The machine shop has sharp things, pointy things, and lasers. What more do you want?

Mail Room



Location — Facility



Home to Paul Foscaldo's trivia questions and source of the latest shipment from McMaster Carr.

Material Science Lab



Location — Lab

The perfect place to test hardness, tensile strength, compression strength, melting temperature, and play with really expensive machines.

Mini Metal Shop



Location — Classroom



The main shop may be closed but you can still machine metal parts at all hours except between 2 and 6 AM

Mini Wood Shop



Location — Classroom



Your one stop place to take those 2x4s and make a desk, door, or trebuchet.

Robotics Lab



Location — Classroom

The Olin Biomimetic Robotics Lab, supplying the Empire with quality assault walkers since 2003.

Also the current home of the M2 bipedal robot and snake locomotion projects.

Studio

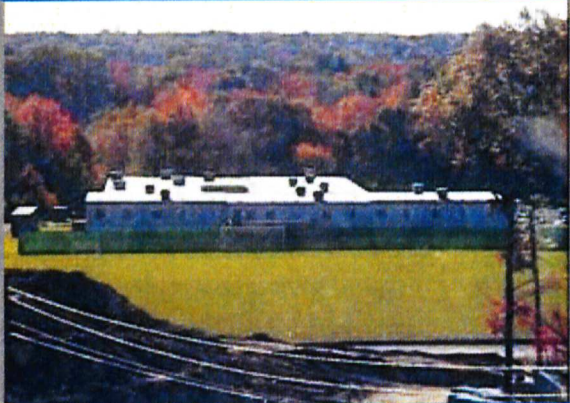


Location — Classroom



*Home to ICB and UOCD for
freshmen and sophomores*

The Mods

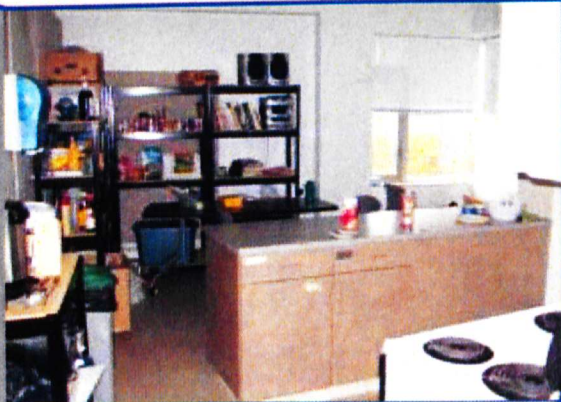


Location



The mods have played a huge role in Olin's history, including being home to Mu Omicron Delta.

West Hall Kitchen



Location — Facility

The West Hall Kitchen is the only kitchen in Massachusetts with a shower.

West Hall Second Floor



Location — Lounge



Gamers get +0/+1. You lose 1 hour of sleep when the Lounge enters play.

The 2nd Floor Lounge is the central hub of life in West Hall. Avoid walking in here if you have an appointment since you will lose all track of time.